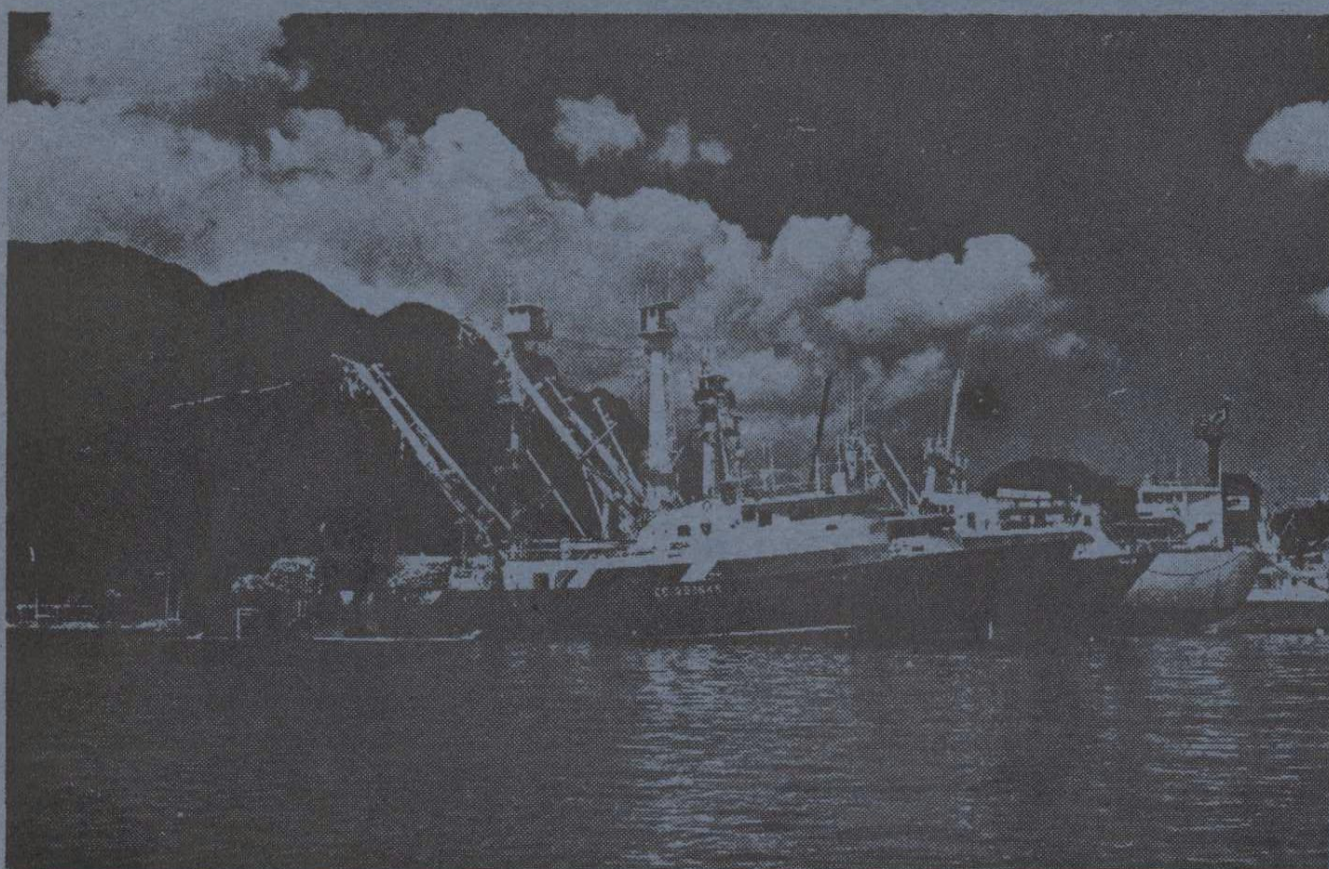


SEYCHELLES FISHING AUTHORITY

TUNA BULLETIN



Year 2010

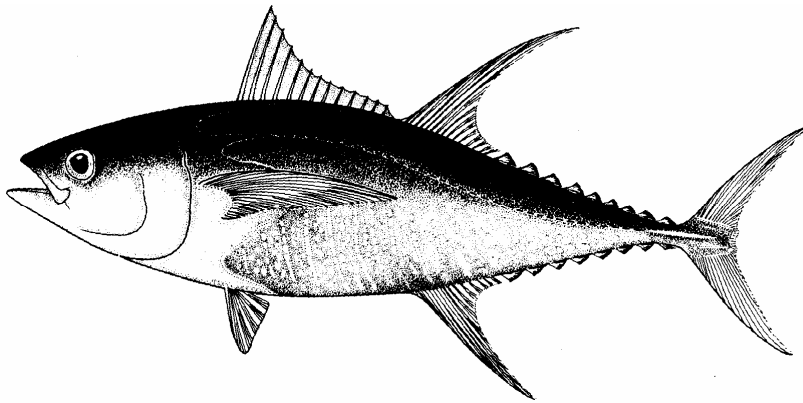


SEYCHELLES FISHING AUTHORITY

P.O. Box 449
Fishing Port
Mahé
Seychelles
Tel: (+248) 4 670300
Fax: (+248) 224508
Email: management@sfa.sc

SEYCHELLES TUNA BULLETIN

Year 2010



Prepared by: **SEYCHELLES FISHING AUTHORITY**

SEYCHELLES FISHING AUTHORITY

The Seychelles Fishing Authority (SFA) was incorporated in August 1984 by the Seychelles Fishing Authority (Establishment) Act. This body was formed in view of the need to develop the fishing industry to its fullest potential. It is a parastatal organisation with autonomous legal and financial status, supervised by a board of directors appointed by the President.

The Ministry of Investment, Natural Resources and Industry is responsible for policy directives in fisheries related matters, and SFA is the executive arm of the government in all fisheries activities. Responsibilities include:

- assessment and management of the fisheries resources;
- assistance in conducting negotiations with foreign fishing fleet operators;
- coordination and support of fishing ventures and owner/operators;
- management of the fishing port;
- development of gear technology;
- coordination of manpower training in the fishing sector;

This volume of the Tuna Bulletin contains fisheries statistics in the Western Indian Ocean (WIO) reported by purse seiners and longliners licensed to fish inside of the Seychelles EEZ for years 2009 and 2010



Finley Racombo
Chief Executive Officer

SUMMARY

Data used to generate the tables and figures presented here are based on daily catch and effort forms (logbooks) returned from fishing vessels that are licensed to fish in the Seychelles EEZ and for purse seiners, as well as from data collected via the tuna sampling programme conducted during transshipment in Port Victoria. Sometimes there are delays in these being received at SFA, especially for longliners that often spend up to a year at sea, and for purse seiners the delays are usually during and just after the second quarter of the year when most vessels are fishing in the Mozambique Channel and are not necessarily using Port Victoria for transshipment.

Readers should note that many of the figures presented for longline fishing vessel are subject to revision (usually upwards) as more data become available. The closing date for compilation of data prior to the generation of the statistical tables is shown at the head of each table.

PURSE SEINERS

PRINCIPAL POINTS

- The total catch reported by purse seiners licensed in Seychelles during the year 2009 was 262,719 MT. This was achieved by an average of 38 active vessels per month and a fishing effort of 10, 936 fishing days giving a mean catch rate of 24.02 MT/fishing days.
- The purse seine tuna catch reported for the Western Indian Ocean during the first semester of 2010 was 128,692 MT obtained from a fishing effort of 4,513 fishing days, this giving a mean catch rate of 28.52 MT/fishing days. This represents an increase of 11 % in catches from 116, 000 MT recorded during the same period in 2009.
- During the second semester of 2010, a total of 150,552 MT of tuna was caught from a fishing effort of 4,806 fishing days. This represents a 3 % increase in total catch over the same period in 2009. The mean catch rate recorded during the second semester of 2010 was 31.33 MT/fishing days compared to 28.50 MT/fishing day recorded during the same period in 2009.
- The total purse seine tuna catches for the year 2010 is estimated at 279,244 MT representing an increase of 6 % or 16,525 MT of tuna above the total catch recorded in 2009. This was achieved by an average of 33 vessels active per month and fishing effort of 9,318 fishing days. Thus the mean catch rate for 2010 was estimated at 29.97 MT/fishing days.

Table I. Species composition of the total catch reported for the year 2009 and 2010.

SPECIES	2009	%	2010	%
YELLOWFIN (<i>Thunnus albacares</i>)	84,821	32	103, 127	37
SKIPJACK (<i>Katsuwonus pelamis</i>)	150,420	57	153,782	55
BIGEYE (<i>Thunnus obesus</i>)	26,987	10	22,102	8
OTHERS	491	1	233	0
TOTAL	262,719		279,244	

During 2010, skipjack tuna dominated the catch accounting for 55 % of the total catch followed by yellowfin tuna (37 %) and bigeye tuna (8 %). Catches of yellowfin and skipjack increased by 22 % and 2 % respectively, whilst that of bigeye tuna decreased by 18 %.

Readers should note that the catch composition recorded by fishermen in their daily catch and effort reports were corrected based on scientific sampling carried out during transshipment or landing in Port Victoria.

1. Table 3 shows purse seine transshipment or landing statistics by harbour.
2. It should be noted that the figures represent the transshipment or landing of vessels whose trips ENDED in the month indicated and NOT the actual month of physical transshipment or landing of the catch.
 - During the first semester of 2010, transshipment and landing through Port Victoria amounted to 92,091 MT representing 72 % of the total catch. For the same period in 2009 a total of 72,197 MT (62% of the total catch) was unloaded in Port Victoria. This represents an increase of 28 % in total tuna transshipped/landed during the first semester of 2010 over the same period in 2009 (table 3).
 - During the second semester of 2010, an increase of 55 % was recorded in total tuna transshipped/landed in Port Victoria compared to the first semester. A total of 143,115 MT, 95 % of the total catch was unloaded here compared to 139,398 MT for the same period of the previous year.
 - For the whole of 2010, a total of 235,206 MT of tuna was transshipped in Port Victoria compared to 211,595 MT in 2009. This represents 84% of the total catch for the year 2010 and an increase of 11% above the previous year.

LONGLINERS

PRINCIPAL POINTS

Readers should be aware that the longliners statistics represent only a small sample of the total longliners activity in the WIO because:

- Not all longliners in the WIO have a licence to fish in the Seychelles EEZ and therefore are under no obligation to report to SFA.
- Some Distant Water Fishing Nations (DWFN) provide SFA with log sheets covering their activity in the whole Indian Ocean while others confine their reports to the Seychelles EEZ.

Since the duration of licences can vary from one month to twelve months, for comparison purposes, each month covered in a logbook was considered as one logbook.

The statistics published for 2009 are related to 604 logbooks (months) or 81 % logbook received at the time when statistical tables were generated. A total of 112 licenses were issued to 93 vessels in 2009. During 2010, a total of 396 logbooks (months) or 84 % logbooks were received, for the 65 licenses issued to 55 vessels.

Analysis of data collected to date show that:

- The total catch for the whole year 2009 was 10,221 MT obtained from a fishing effort 25.3 million hooks, thus giving a mean catch rate of 0.40 MT/1000 hooks.
- During the first semester of 2010, a total catch of 3,906 MT was reported, compared to 6,395 MT for the same period in 2009 representing a decrease of 39 %. This was achieved from a fishing effort of 10.6 million hooks giving a mean catch rate of 0.37 MT/1000 hooks. The mean catch rate for the same period in 2009 was 0.42 MT/1000 hooks.
- During the second semester of 2010 a total catch of 4,687 MT was reported compared to 3,826 MT for 2009. A total of 11.5 million hooks were set during that period giving a mean catch rate of 0.41 MT/1000 hooks compared to 0.38 MT/1000 hooks, which was recorded during the same period the previous year.
- For the whole of 2010, a total catch of 8,594 MT was reported representing a decrease of 16 % in catches when compared to the year 2009. The 2010 catches were achieved from a fishing effort of approximately 22.2 million hooks giving a mean catch rate of 0.39 MT/1000 hooks compared to 0.40 MT/1000 hooks for 2009.
- For the whole year 2010, yellowfin tuna, bigeye tuna and swordfish recorded a decrease 5 %, 10 % and 30% respectively. Bigeye tuna dominated the catch accounting for 54% of the total catch whilst yellowfin tuna up to 10 % of the total catch.

Table II. Species composition of the total catch reported for the year 2009 and 2010.

SPECIES	2009	%	2010	%
YELLOWFIN (<i>Thunnus albacares</i>)	881	9	840	10
BIGEYE (<i>Thunnus obesus</i>)	5,112	50	4,603	54
SWORDFISH (<i>Xiphias gladius</i>)	694	7	485	6
OTHERS	3,534	34	2,666	30
TOTAL	10,221		8,594	

Definitions of terms used

TERMS	DEFINITION
VESSELS LICENSED	Vessels licensed to fish in the Seychelles EEZ.
VESSELS FISHED	Vessels whose logbook has been received at SFA and which contains at least one DAY FISHED for the month in question.
VESSELS COVERED	Vessels for which a logbook has been received containing at least one fishing day during the month; or a vessel that is not fishing yet the SFA knows of its activities.
FISHING DAYS	Days spent at sea minus days on passage, days adrift due to mechanical breakdown or other work stoppage. This may include days spent in searching even if no fish was actually caught or days spent drifting by flotsam or fish aggregating devices (FADs).
CATCH	MT - Metric Tonne (1000 kg)
CATCH RATE - Purse seine	Metric Tonne per fishing day
CATCH RATE - Longline	Metric tonne/1000 hooks
TRANSSHIPMENT and LANDING	Generally the transfer of tuna fish from a catcher vessel to a 'reefer' or transport vessel. This normally takes place in port. This also includes fish landed in Port Victoria, Seychelles for the IOT canning factory. Most of this is subsequently re-exported.
COUNTRY OF REGISTRATION	Country in which ownership of the vessel is registered.
FLAG	Country and agreement under which the vessel is managed. Country and Flag are usually the same but can sometimes be different.

PURSE SEINERS

Table 1 shows the catch and effort statistics for all purse seiners combined. Table 2.1 shows statistics for the Spanish fleet. Table 2.2 shows statistics for the French fleet. Table 2.3 statistics for Seychelles fleet and Table 2.4 statistics for "Others" which represents the other nationalities combined. The "Vessels Licensed" may exceed the "Vessels Covered" column if vessels licensed to fish in a particular month have not reported their catch, for whatever reason, by the time the database was closed prior to generation of these tables. This closing date is shown in the heading of each table. If vessels, which have not fished in the Seychelles EEZ and are not licensed to do so, report fishing OUTSIDE the EEZ, then "Vessels Covered" may sometimes exceed "Vessels Licensed".

The total catch for each trip has been taken from records of transshipment and landings whenever complete unloading occurred in Seychelles or the record was otherwise available from another port; otherwise total catch has been estimated from logbooks containing daily catch and effort statistics. The species composition declared in the logbooks has been corrected based on data collected during the tuna-sampling program conducted during transshipment and landings in Port Victoria. Catches have been estimated in wet weight rather than dry weight.

- The Spanish fleet reported the highest amount of tuna caught during the year 2010 with a reported catch of 137,386 MT. This represents an increase of 29 % over the 106,286 MT reported during the same period of the previous year.
- The French fleet recorded a decrease of 18% in their total catch during 2010. A total catch of 47,102 MT was reported for that year compared to 57,763 MT during the year 2009.
- The Seychelles fleet reported a total catch of 75,787 MT representing an increase of 11 % over 68,339 MT reported in 2009.
- The remaining 18,969 MT of tuna caught during 2010 were taken by vessels from other countries. They have classified as "Other". (See footnote of Table 6 for details).

Maps 1 and 2 show the distribution of reported catch of purse seiner by 1° square in the WIO for the first and second semester of 2010 respectively.

Maps 3 and 4 illustrate the distribution of reported catches of purse seiner for the whole of 2009 and 2010 respectively.

TABLE 1. Catch Statistics for Purse Seiners in the Western Indian Ocean
Database closed on 04/04/11
(Units: catch MT, percentages in brackets, catch rates MT/fishing day)

Year: 2009

	VESSELS	VESSELS	DAYS	CATCH	YELLOWFIN		SKIPJACK		BIGEYE		ALBACORE		Total	CUMMUL
MONTH	LICENSED	COVERED	FISHED	RATE	Mt	%	Mt	%	Mt	%	Mt	%	MT	TOTAL
Jan	55	45	1099	28.03	12802	42	13537	44	4432	14	18	0	30800	30800
Feb	49	44	1026	21.77	9166	41	9751	44	3401	15	4	0	22345	53145
Mar	48	41	1055	26.23	5888	21	18296	66	3451	12	35	0	27681	80825
Apr	44	40	920	14.87	3270	24	8954	65	1401	10	51	0	13676	94502
May	42	37	883	14.05	2804	23	8420	68	1123	9	60	0	12407	106909
Jun	41	37	805	11.30	3716	41	4306	47	897	10	171	2	9091	116000
Jul	38	36	873	16.45	6944	48	5749	40	1624	11	45	0	14365	130365
Aug	38	35	893	43.87	10060	26	25625	65	3468	9	21	0	39175	169540
Sep	35	36	879	37.87	8941	27	21355	64	3002	9	0	0	33303	202843
Oct	34	37	859	30.90	7010	26	17969	68	1562	6	0	0	26556	229399
Nov	33	36	732	13.65	3270	33	5965	60	757	8	0	0	9992	239391
Dec	33	36	911	25.61	10949	47	10494	45	1869	8	15	0	23327	262719
	41	38	10936	24.02	84821	32	150420	57	26987	10	421	0	262719	

Year: 2010

	VESSELS	VESSELS	DAYS	CATCH	YELLOWFIN		SKIPJACK		BIGEYE		ALBACORE		Total	CUMMUL
MONTH	LICENSED	COVERED	FISHED	RATE	Mt	%	Mt	%	Mt	%	Mt	%	MT	TOTAL
Jan	48	36	906	32.63	9069	31	17112	58	3388	11	0	0	29571	29571
Feb	48	34	712	37.94	7744	29	16307	60	2952	11	14	0	27022	56593
Mar	38	34	789	26.25	7257	35	11647	56	1787	9	8	0	20711	77304
Apr	34	32	767	24.66	5236	28	12599	67	1045	6	20	0	18905	96209
May	34	32	688	20.25	4793	34	8070	58	957	7	98	1	13940	110149
Jun	35	31	650	28.51	9075	49	6957	38	2498	13	13	0	18543	128692
Jul	34	32	712	26.52	7265	38	10412	55	1195	6	5	0	18878	147570
Aug	34	33	845	30.70	7814	30	16441	63	1676	6	0	0	25932	173501
Sep	34	33	786	39.05	8719	28	20043	65	1934	6	0	0	30696	204197
Oct	33	33	798	40.85	13741	42	16875	52	2001	6	0	0	32617	236814
Nov	33	33	769	32.62	10111	40	13070	52	1889	8	0	0	25070	261884
Dec	35	36	896	19.37	12301	71	4250	24	779	4	29	0	17359	279244
	37	33	9318	29.97	103127	37	153782	55	22102	8	187	0	279244	

TABLE 2.1. Statistics for Purse Seiners in the Western Indian Ocean by Country
Database closed on 04/04/11
(Units: catch MT, percentages in brackets, catch rates MT/fishing day)

Country: SPAIN Year: 2009

	VESSELS	VESSELS	DAYS	CATCH	YELLOWFIN	SKIPJACK		BIGEYE		ALBACORE		Total	CUMMUL	
MONTH	LICENSED	COVERED	FISHED	RATE	Mt	%	Mt	%	Mt	%	Mt	%	MT	TOTAL
Jan	19	15	374	32.65	4352	36	5921	48	1939	16	2	0	12214	12214
Feb	16	14	329	25.31	2504	30	4473	54	1319	16	0	0	8318	20531
Mar	16	14	356	29.87	2066	19	7170	67	1386	13	1	0	10627	31158
Apr	16	13	327	17.98	1245	21	4064	69	559	10	1	0	5870	37029
May	16	12	301	16.33	1099	22	3325	68	492	10	0	0	4916	41944
Jun	16	11	240	12.68	924	30	1776	58	346	11	0	0	3046	44991
Jul	16	12	323	18.46	2446	41	2815	47	693	12	0	0	5955	50946
Aug	16	13	341	57.26	4937	25	12916	66	1701	9	0	0	19554	70500
Sep	16	13	334	44.16	3930	27	9493	64	1335	9	0	0	14759	85259
Oct	16	13	297	25.17	1937	26	5120	69	411	5	0	0	7467	92727
Nov	16	13	233	12.69	1041	35	1650	56	262	9	0	0	2953	95680
Dec	16	13	360	29.43	4878	46	4935	47	779	7	15	0	10606	106286
	16	13	3814	27.86	31359	30	63658	60	11224	11	19	0	106286	

Country: SPAIN Year: 2010

	VESSELS	VESSELS	DAYS	CATCH	YELLOWFIN	SKIPJACK		BIGEYE		ALBACORE		Total	CUMMUL	
MONTH	LICENSED	COVERED	FISHED	RATE	Mt	%	Mt	%	Mt	%	Mt	%	MT	TOTAL
Jan	16	13	357	41.87	3941	26	9365	63	1627	11	0	0	14935	14935
Feb	16	13	270	47.92	3586	28	7940	61	1422	11	13	0	12960	27896
Mar	14	13	327	28.63	3361	36	5172	55	819	9	8	0	9360	37255
Apr	14	13	323	29.37	2445	26	6529	69	509	5	11	0	9496	46751
May	14	13	288	27.40	2816	36	4569	58	442	6	44	1	7885	54636
Jun	14	13	306	31.53	3894	40	4677	48	1074	11	6	0	9651	64287
Jul	14	12	305	26.79	3112	38	4558	56	493	6	0	0	8163	72450
Aug	14	13	356	33.11	3604	31	7474	63	722	6	0	0	11800	84250
Sep	14	13	330	52.87	4937	28	11410	65	1089	6	0	0	17435	101685
Oct	14	13	339	48.05	5934	36	9352	57	1000	6	0	0	16285	117971
Nov	14	13	312	37.32	4166	36	6674	57	820	7	0	0	11661	129631
Dec	14	13	365	21.22	4969	64	2366	31	391	5	29	0	7755	137386
	14	13	3879	35.42	46762	34	80088	58	10408	8	110	0	137386	

TABLE 2.2. Statistics for Purse Seiners in the Western Indian Ocean by Country
Database closed on 04/04/11
(Units: catch MT, percentages in brackets, catch rates MT/fishing day)

Country: FRANCE Year: 2009

	VESSELS	VESSELS	DAYS	CATCH	YELLOWFIN	SKIPJACK		BIGEYE		ALBACORE		Total	CUMMUL	
MONTH	LICENSED	COVERED	FISHED	RATE	Mt	%	Mt	%	Mt	%	Mt	%	MT	TOTAL
Jan	17	14	327	25.59	4653	56	2679	32	1024	12	0	0	8356	8356
Feb	14	14	302	18.15	2514	46	2071	38	900	16	0	0	5485	13841
Mar	14	12	304	27.24	2085	25	5210	63	960	12	21	0	8276	22117
Apr	14	13	266	13.53	1053	29	2064	57	459	13	15	0	3592	25709
May	14	12	268	11.26	988	33	1775	59	197	7	56	2	3015	28724
Jun	14	13	242	9.42	1650	72	368	16	93	4	171	7	2282	31006
Jul	14	9	178	19.34	1999	58	1101	32	309	9	32	1	3441	34447
Aug	14	7	170	32.81	1478	27	3588	65	496	9	0	0	5562	40009
Sep	14	8	172	31.05	1444	27	3426	64	482	9	0	0	5354	45363
Oct	14	8	175	36.16	1649	26	4294	68	368	6	0	0	6311	51675
Nov	14	9	179	11.47	691	34	1207	59	157	8	0	0	2055	53729
Dec	14	9	181	22.31	2220	55	1524	38	289	7	0	0	4033	57763
	14	11	2762	20.91	22424	39	29305	51	5735	10	295	1	57763	

Country: FRANCE Year: 2010

	VESSELS	VESSELS	DAYS	CATCH	YELLOWFIN	SKIPJACK		BIGEYE		ALBACORE		Total	CUMMUL	
MONTH	LICENSED	COVERED	FISHED	RATE	Mt	%	Mt	%	Mt	%	Mt	%	MT	TOTAL
Jan	16	8	195	20.60	2149	54	1374	34	484	12	0	0	4008	4008
Feb	16	8	168	22.44	1222	32	2195	58	342	9	1	0	3766	7774
Mar	9	8	202	18.14	1368	37	2023	55	286	8	0	0	3676	11450
Apr	9	8	188	20.27	1370	36	2205	58	236	6	4	0	3818	15268
May	9	8	185	15.49	1118	39	1408	49	309	11	17	1	2859	18127
Jun	9	7	121	29.87	2529	70	538	15	541	15	8	0	3615	21742
Jul	9	8	157	21.57	1606	48	1602	47	169	5	0	0	3376	25119
Aug	9	8	201	27.38	1593	29	3563	65	335	6	0	0	5491	30609
Sep	9	8	174	26.00	1276	28	2966	66	279	6	0	0	4521	35130
Oct	9	8	162	31.81	3575	69	1325	26	261	5	0	0	5161	40291
Nov	9	8	168	21.88	2382	65	1068	29	235	6	0	0	3685	43976
Dec	9	8	212	14.77	2429	78	597	19	100	3	0	0	3126	47102
	10	8	2132	22.10	22616	48	20864	44	3577	8	29	0	47102	

TABLE 2.3 Statistics for Purse Seiners in the Western Indian Ocean by Country
Database closed on 04/04/11
(Units: catch MT, percentages in brackets, catch rates MT/fishing day)

Country: SEYCHELLES Year: 2009

	VESSELS	VESSELS	DAYS	CATCH	YELLOWFIN	SKIPJACK	BIGEYE	ALBACORE	Total	CUMMUL				
MONTH	LICENSED	COVERED	FISHED	RATE	Mt	%	Mt	%	Mt	%	Mt	%	MT	TOTAL
Jan	12	9	235	32.58	2528	33	3983	52	1115	15	7	0	7644	7644
Feb	12	9	207	25.97	2719	51	1920	36	743	14	0	0	5382	13026
Mar	11	8	228	23.94	1025	19	3713	68	719	13	1	0	5465	18491
Apr	11	7	159	16.23	490	19	1923	75	164	6	1	0	2578	21069
May	9	7	171	17.00	459	16	2226	77	218	7	0	0	2903	23972
Jun	8	7	173	15.09	820	31	1478	57	316	12	0	0	2614	26586
Jul	5	8	218	17.43	1934	51	1355	36	512	13	0	0	3803	30388
Aug	5	8	204	48.49	2594	26	6378	65	906	9	0	0	9879	40268
Sep	3	8	203	41.23	2177	26	5441	65	732	9	0	0	8351	48618
Oct	2	9	204	44.93	2452	27	6147	67	553	6	0	0	9153	57771
Nov	1	8	195	21.50	1255	30	2656	63	288	7	0	0	4199	61970
Dec	1	9	235	27.05	2877	45	2937	46	554	9	1	0	6369	68339
	7	8	2432	28.10	21330	31	40156	59	6821	10	10	0	68339	

Country: SEYCHELLES Year: 2010

	VESSELS	VESSELS	DAYS	CATCH	YELLOWFIN	SKIPJACK	BIGEYE	ALBACORE	Total	CUMMUL				
MONTH	LICENSED	COVERED	FISHED	RATE	Mt	%	Mt	%	Mt	%	Mt	%	MT	TOTAL
Jan	9	9	245	35.00	2153	25	5366	63	1052	12	0	0	8571	8571
Feb	9	9	195	43.48	2312	27	5148	61	1018	12	0	0	8479	17049
Mar	9	9	190	34.55	2106	32	3841	59	602	9	0	0	6561	23610
Apr	9	8	180	24.22	1073	25	3038	70	238	5	5	0	4354	27964
May	9	8	172	14.23	644	26	1631	67	167	7	9	0	2450	30414
Jun	9	7	143	25.43	1698	47	1360	38	569	16	0	0	3627	34042
Jul	8	8	186	33.26	1900	31	3816	62	483	8	0	0	6199	40241
Aug	8	8	213	31.30	1975	30	4192	63	502	8	0	0	6669	46909
Sep	8	8	185	35.54	1840	28	4309	65	437	7	0	0	6586	53495
Oct	7	8	214	44.57	3286	34	5646	59	616	6	0	0	9548	63043
Nov	7	8	204	40.32	2938	36	4573	56	701	9	0	0	8213	71256
Dec	8	9	196	23.14	3405	75	907	20	218	5	0	0	4530	75787
	8	8	2323	32.63	25330	33	43828	58	6602	9	14	0	75787	

TABLE 2.4 Statistics for Purse Seiners in the Western Indian Ocean by Country
Database closed on 04/04/11
(Units: catch MT, percentages in brackets, catch rates MT/fishing day)

Country: OTHER COUNTRIES Year: 2009

	VESSELS	VESSELS	DAYS	CATCH	YELLOWFIN		SKIPJACK		BIGEYE		ALBACORE		Total	CUMMUL
MONTH	LICENSED	COVERED	FISHED	RATE	Mt	%	Mt	%	Mt	%	Mt	%	MT	TOTAL
Jan	7	7	164	15.81	1269	49	954	37	354	14	8	0	2587	2587
Feb	7	7	188	16.78	1429	45	1288	41	439	14	4	0	3159	5746
Mar	7	7	168	19.78	712	21	2203	66	387	12	12	0	3313	9059
Apr	3	7	169	9.68	481	29	903	55	218	13	33	2	1636	10695
May	3	6	144	10.94		16	1096	70	217	14	4	0	1574	12269
Jun	3	6	149	7.72	322	28	684	60	142	12	0	0	1149	13418
Jul	3	7	154	7.55	565	48	478	41	110	9	13	1	1167	14584
Aug	3	7	178	23.45	1050	25	2742	66	365	9	21	1	4179	18763
Sep	2	7	170	28.44	1391	29	2994	62	452	9	0	0	4839	23602
Oct	2	7	185	19.64	972	27	2408	66	230	6	0	0	3625	27227
Nov	2	6	125	6.28	283	36	453	58	49	6	0	0	785	28012
Dec	2	5	134	17.29	974	42	1098	47	246	11	0	0	2318	30330
	4	7	1928	15.73	9707	32	17301	57	3207	11	97	0	30330	

Country: OTHER COUNTRIES Year: 2010

	VESSELS	VESSELS	DAYS	CATCH	YELLOWFIN		SKIPJACK		BIGEYE		ALBACORE		Total	CUMMUL
MONTH	LICENSED	COVERED	FISHED	RATE	Mt	%	Mt	%	Mt	%	Mt	%	MT	TOTAL
Jan	7	6	110	18.69	826	40	1007	49	224	11	0	0	2057	2057
Feb	7	4	79	23.02	624	34	1023	56	169	9	0	0	1817	3874
Mar	6	4	70	15.92	422	38	610	55	81	7	0	0	1114	4988
Apr	2	3	75	16.49	349	28	826	67	62	5	0	0	1237	6226
May	2	3	44	16.96	216	29	462	62	39	5	28	4	746	6972
Jun	3	4	81	20.48	954	58	382	23	314	19	0	0	1650	8621
Jul	3	4	64	17.70	648	57	435	38	51	4	5	0	1140	9761
Aug	3	4	75	26.45	643	33	1212	61	117	6	0	0	1972	11733
Sep	3	4	97	22.19	666	31	1358	63	129	6	0	0	2154	13886
Oct	3	4	83	19.53	947	58	552	34	125	8	0	0	1623	15509
Nov	3	4	84	17.98	625	41	753	50	133	9	0	0	1512	17021
Dec	4	6	123	15.80	1498	77	380	19	71	4	0	0	1948	18969
	4	4	985	19.26	8419	44	9002	47	1515	8	34	0	18969	

TABLE 3. Purse Seiner Transshipment Statistics by Harbour of Transshipment
Database closed on 04/04/11
(Units: catch MT)

Port: VICTORIA, SEYCHELLES Year: 2009

MONTH	NO. OF						Total	CUMMUL
	SEINERS	YELLOWFIN	SKIPJACK	BIGEYE	ALBACORE	OTHERS		TOTAL
Jan	41	11419	12257	4049	18	11	27753	27753
Feb	38	6717	6677	2358	4	24	15780	43534
Mar	25	1428	3526	731	27	0	5712	49245
Apr	23	1790	4168	786	43	0	6787	56033
May	24	1765	4921	862	4	0	7552	63585
Jun	32	3432	4172	873	135	1	8612	72197
Jul	35	6784	5680	1592	45	3	14105	86301
Aug	35	9588	24429	3293	21	0	37331	123633
Sep	34	8474	20257	2840	0	5	31576	155209
Oct	35	6673	17036	1487	0	6	25202	180411
Nov	32	3152	5768	733	0	0	9653	190064
Dec	33	10480	9405	1630	15	0	21530	211594
	32	71700	118298	21234	312	50	211594	

Port: VICTORIA, SEYCHELLES Year : 2010

MONTH	NO. OF						Total	CUMMUL
	SEINERS	YELLOWFIN	SKIPJACK	BIGEYE	ALBACORE	OTHERS		TOTAL
Jan	32	8066	15129	3061	0	2	26259	26259
Feb	33	5974	13492	2411	1	5	21883	48141
Mar	28	3914	6038	917	0	0	10869	59011
Apr	19	2574	5180	464	15	3	8235	67246
May	25	3372	5347	557	45	21	9343	76589
Jun	26	7075	6357	2057	13	0	15502	92091
Jul	29	6595	9544	1108	5	0	17253	109344
Aug	31	7604	16262	1657	0	0	25523	134866
Sep	31	8115	18827	1817	0	0	28759	163625
Oct	29	13164	16382	1927	0	0	31473	195098
Nov	31	9881	12868	1843	0	0	24592	219690
Dec	31	10884	3883	720	29	0	15515	235206
	29	87219	129309	18538	109	32	235206	

Port: DIEGO SUAREZ, MADAGASCAR Year: 2009

MONTH	N0. OF						Total	CUMMUL
	SEINERS	YELLOWFIN	SKIPJACK	BIGEYE	ALBACORE	OTHERS		TOTAL
Jan	5	297	433	135	0	0	865	865
Feb	17	1714	2595	853	0	0	5161	6027
Mar	31	3947	13297	2461	6	10	19721	25748
Apr	19	1056	3532	350	2	1	4941	30689
May	14	378	1412	89	0	0	1879	32568
Jun	1	1	8	1	0	0	10	32578
Jul	0	0	0	0	0	0	0	32578
Aug	0	0	0	0	0	0	0	32578
Sep	1	195	538	77	0	0	810	33388
Oct	1	74	213	13	0	0	300	33688
Nov	0	0	0	0	0	0	0	33688
Dec	2	220	197	53	0	0	469	34157
	8	7881	22224	4032	8	11	34157	

Port: DIEGO SUAREZ, MADAGASCAR Year: 2010

MONTH	N0. OF						Total	CUMMUL
	SEINERS	YELLOWFIN	SKIPJACK	BIGEYE	ALBACORE	OTHERS		TOTAL
Jan	3	555	1055	171	0	0	1781	1781
Feb	9	1279	1879	406	13	0	3576	5357
Mar	17	3011	5078	787	8	12	8896	14253
Apr	17	2402	6556	526	5	2	9491	23744
May	14	811	2095	151	24	0	3081	26825
Jun	2	196	311	38	0	0	545	27370
Jul	0	0	0	0	0	0	0	27370
Aug	0	0	0	0	0	0	0	27370
Sep	0	0	0	0	0	0	0	27370
Oct	0	0	0	0	0	0	0	27370
Nov	1	0	0	0	0	0	0	27370
Dec	0	0	0	0	0	0	0	27370
	5	8254	16973	2078	50	14	27370	

Port: MOMBASA, KENYA**Year: 2009**

MONTH	N0. OF						Total	CUMMUL
	SEINERS	YELLOWFIN	SKIPJACK	BIGEYE	ALBACORE	OTHERS		TOTAL
Jan	1	340	248	68	0	0	656	656
Feb	1	20	32	9	0	0	61	717
Mar	0	0	0	0	0	0	0	717
Apr	0	0	0	0	0	0	0	717
May	0	0	0	0	0	0	0	717
Jun	1	131	72	14	0	0	217	933
Jul	1	161	68	32	0	0	261	1194
Aug	2	472	1196	175	0	0	1843	3037
Sep	1	68	199	24	0	0	290	3327
Oct	0	0	0	0	0	0	0	3327
Nov	0	0	0	0	0	0	0	3327
Dec	0	0	0	0	0	0	0	3327
	1	1192	1815	320	0	0	3327	

Port: MOMBASA, KENYA**Year: 2010**

MONTH	N0. OF						Total	CUMMUL
	SEINERS	YELLOWFIN	SKIPJACK	BIGEYE	ALBACORE	OTHERS		TOTAL
Jan	0	0	0	0	0	0	0	0
Feb	1	166	284	42	0	0	492	492
Mar	1	278	370	59	0	0	707	1199
Apr	0	0	0	0	0	0	0	1199
May	2	153	93	193	0	0	438	1637
Jun	4	1487	233	249	0	0	1969	3607
Jul	2	355	703	69	0	0	1126	4733
Aug	1	42	53	5	0	0	99	4832
Sep	0	0	0	0	0	0	0	4832
Oct	0	0	0	0	0	0	0	4832
Nov	0	0	0	0	0	0	0	4832
Dec	0	0	0	0	0	0	0	4832
	1	2481	1735	616	0	0	4832	

Port: PORT LOUIS, MAURITIUS**Year: 2009**

MONTH	N0. OF						Total	CUMMUL
	SEINERS	YELLOWFIN	SKIPJACK	BIGEYE	ALBACORE	OTHERS		TOTAL
Jan	4	745	600	180	0	0	1525	1525
Feb	5	714	446	181	0	0	1342	2868
Mar	4	514	1473	259	2	0	2248	5115
Apr	14	379	1099	226	5	0	1710	6825
May	11	659	2079	172	56	0	2966	9791
Jun	5	152	50	10	37	0	249	10040
Jul	1	0	0	0	0	0	0	10040
Aug	0	0	0	0	0	0	0	10040
Sep	2	204	361	61	0	1	627	10667
Oct	2	137	375	35	0	0	547	11214
Nov	3	0	0	0	0	0	0	11214
Dec	0	0	0	0	0	0	0	11214
	4	3505	6484	1124	100	1	11214	

Port: PORT LOUIS, MAURITIUS**Year: 2010**

MONTH	N0. OF						Total	CUMMUL
	SEINERS	YELLOWFIN	SKIPJACK	BIGEYE	ALBACORE	OTHERS		TOTAL
Jan	2	341	594	99	0	0	1034	1034
Feb	2	326	652	93	0	0	1071	2106
Mar	2	54	160	24	0	0	238	2344
Apr	3	260	862	56	0	0	1178	3522
May	4	458	535	56	29	0	1077	4600
Jun	3	316	57	154	0	0	527	5127
Jul	2	315	165	18	0	0	499	5626
Aug	2	169	127	14	0	0	310	5936
Sep	4	604	1216	117	0	0	1937	7872
Oct	4	577	492	75	0	0	1145	9017
Nov	4	230	202	46	0	0	478	9495
Dec	6	1418	367	59	0	0	1844	11339
	3	5067	5430	813	29	0	11339	

TABLE 4. Purse Seiners Active in the Western Indian Ocean by Country of registration
Database closed on 04/04/11

Year 2009

Country	Jan	Feb	Mar	Apr	May	Jun	Jul	Aug	Sep	Oct	Nov	Dec
Spain	15	14	14	13	12	11	12	13	13	13	13	13
France	14	14	12	13	12	13	9	7	8	8	9	9
Italy	1	1	1	1	1	1	1	1	1	1	1	0
Mayotte	2	2	2	2	1	2	2	2	2	2	2	2
Seychelles	9	9	8	7	7	7	8	8	8	9	8	9
Thailand	4	4	4	4	4	3	4	4	4	4	3	3
	45	44	41	40	37	37	36	35	36	37	36	36

Year 2010

Country	Jan	Feb	Mar	Apr	May	Jun	Jul	Aug	Sep	Oct	Nov	Dec
Spain	13	13	13	13	13	13	12	13	13	13	13	13
France	8	8	8	8	8	7	8	8	8	8	8	8
Mayotte	3	3	3	3	3	4	4	4	4	4	4	6
Seychelles	9	9	9	8	8	7	8	8	8	8	8	9
Thailand	3	1	1	0	0	0	0	0	0	0	0	0
	36	34	34	32	32	31	32	33	33	33	33	36

TABLE 5. Purse Seiners Active in the Western Indian Ocean
Database closed on 04/04/11

Year: 2009

Vessel Code	Purse Seiner	Country	Jan	Feb	Mar	Apr	May	Jun	Jul	Aug	Sep	Oct	Nov	Dec
214	ALBACORA 4	ESP	---	---	---	---	---	---	---	---	---	---	---	---
454	FELIPE RUANO	ESP	---	---	---	---	---	---	---	---	---	---	---	---
458	CAMPOLIBRE ALAI	ESP	---	---	---	---	---	---	---	---	---	---	---	---
488	TXORI BERRI	ESP	---											
507	PLAYA DE BAKIO	ESP	---	---	---	---								
530	ELAI ALAI	ESP	---	---	---	---	---	---	---	---	---	---	---	---
615	PLAYA DE ANZORAS	ESP	---	---	---	---	---	---		---	---	---	---	---
629	TXORI TOKI	ESP	---	---	---	---	---	---	---	---	---	---	---	---
700	PLAYA DE ARITZATXU	ESP	---	---	---	---	---	---	---	---	---	---	---	---
711	ALBACAN	ESP	---	---	---	---	---	---	---	---	---	---	---	---
742	TXORI ARGÍ	ESP	---	---	---		---		---	---	---	---	---	---
743	ALBATUN DOS	ESP	---	---	---	---		---	---	---	---	---	---	---
750	IZURDIA	ESP	---	---	---	---	---		---	---	---	---	---	---
762	ALAKRANA	ESP	---	---	---	---	---	---	---	---	---	---	---	---
775	TXORI GORRI	ESP	---	---	---	---	---	---	---	---	---	---	---	---
482	VIA AVENIR	FRA	---	---	---	---	---	---	---	---	---	---	---	---
490	GUEOTEC	FRA	---	---	---	---	---	---						
492	GUERIDEN	FRA	---	---	---	---	---	---						
502	VIA MISTRAL	FRA	---	---	---	---	---	---	---	---	---	---	---	---
551	VIA EUROS	FRA	---	---	---	---	---	---						
572	AVEL VAD	FRA	---	---	---	---		---	---	---	---	---	---	---
600	CAP SAINTE MARIE	FRA	---	---	---	---	---	---	---	---	---	---	---	---
679	MEN GOE	FRA	---	---	---	---	---	---	---					
693	TALENDUIC	FRA	---	---	---	---	---	---	---	---	---	---	---	---
703	STERENN 2	FRA	---	---		---	---	---						
706	CAP SAINT VINCENT 2	FRA	---	---	---	---	---	---	---	---	---	---	---	---
707	MEN CREN	FRA	---	---										
760	GLENAN	FRA	---	---	---	---	---	---	---	---	---	---	---	---
769	LE TITAN	FRA	---	---	---	---	---	---	---					
790	FRANCHE TERRE	FRA									---	---	---	---
796	TORRE GIULIA	FRA											---	---
595	TORRE GIULIA	ITA	---	---	---	---	---	---	---	---	---	---	---	
767	TREVIGNON	MYT	---	---	---	---		---	---	---	---	---	---	---
770	DRENNEC	MYT	---	---	---	---	---	---	---	---	---	---	---	---
680	XIXILI	SYC	---	---	---	---	---	---	---	---	---	---	---	---
682	ERROXAPE	SYC	---	---	---	---	---	---	---	---	---	---	---	---
690	DEMIKU	SYC	---	---	---	---	---	---	---	---	---	---	---	---
721	INTERTUNA UNO	SYC	---	---	---				---	---	---	---	---	---
722	INTERTUNA DOS	SYC	---	---	---	---	---	---	---	---	---	---	---	---
723	INTERTUNA TRES	SYC	---	---	---	---	---	---	---	---	---	---	---	---
738	TXORI AUNDI	SYC	---	---	---	---	---	---	---	---	---	---	---	---
739	ARTZA	SYC	---	---	---	---	---	---	---	---	---	---	---	---
745	INTERTUNA CUATRO	SYC	---	---										
764	DRACO	SYC										---		---
777	THAI UNION 1	THAI	---	---	---	---	---	---	---	---	---	---	---	---
778	THAI UNION 2	THAI	---	---	---	---	---	---	---	---	---	---	---	---
781	THAI UNION 3	THAI	---	---	---	---	---		---	---	---	---		
782	THAI UNION STAR	THAI	---		---	---	---	---	---	---	---	---	---	---

FRA :France

ESP: Spain

SYC: Seychelles

ITA: Italy

MYT: Mayotte

THAI: Thailand

Year: 2010

Vessel Code	Purse Seiner	Country	Jan	Feb	Mar	Apr	May	Jun	Jul	Aug	Sep	Oct	Nov	Dec
214	ALBACORA 4	ESP	---	---	---	---	---	---	---	---	---	---	---	---
454	FELIPE RUANO	ESP	---	---	---	---	---	---	---	---	---	---	---	---
458	CAMPOLIBRE ALAI	ESP	---	---	---	---	---	---	---	---	---	---	---	---
530	ELAI ALAI	ESP	---	---	---	---	---	---	---	---	---	---	---	---
615	PLAYA DE ANZORAS	ESP	---	---	---	---	---	---	---	---	---	---	---	---
629	TXORI TOKI	ESP	---	---	---	---	---	---	---	---	---	---	---	---
700	PLAYA DE ARITZATXU	ESP	---	---	---	---	---	---	---	---	---	---	---	---
711	ALBACAN	ESP	---	---	---	---	---	---	---	---	---	---	---	---
742	TXORI ARGÍ	ESP	---	---	---	---	---	---	---	---	---	---	---	---
743	ALBATUN DOS	ESP	---	---	---	---	---	---	---	---	---	---	---	---
750	IZURDIA	ESP	---	---	---	---	---	---	---	---	---	---	---	---
762	ALAKRANA	ESP	---	---	---	---	---	---	---	---	---	---	---	---
775	TXORI GORRI	ESP	---	---	---	---	---	---	---	---	---	---	---	---
482	VIA AVENIR	FRA	---	---	---	---	---	---	---	---	---	---	---	---
502	VIA MISTRAL	FRA	---	---	---	---	---	---	---	---	---	---	---	---
572	AVEL VAD	FRA	---	---	---	---	---	---	---	---	---	---	---	---
600	CAP SAINTE MARIE	FRA	---	---	---	---	---	---	---	---	---	---	---	---
693	TALENDUIC	FRA	---	---	---	---	---	---	---	---	---	---	---	---
706	CAP SAINT VINCENT 2	FRA	---	---	---	---	---	---	---	---	---	---	---	---
760	GLENAN	FRA	---	---	---	---	---	---	---	---	---	---	---	---
796	TORRE GIULIA	FRA	---	---	---	---	---	---	---	---	---	---	---	---
767	TREVIGNON	MYT	---	---	---	---	---	---	---	---	---	---	---	---
770	DRENNEC	MYT	---	---	---	---	---	---	---	---	---	---	---	---
790	FRANCHE TERRE	MYT	---	---	---	---	---	---	---	---	---	---	---	---
798	MANAPANY	MYT						---	---	---	---	---	---	---
835	BERNICA	MYT												---
680	XIXILI	SYC	---	---	---	---	---		---	---	---	---	---	---
682	ERROXAPE	SYC	---	---	---	---	---	---	---	---	---	---	---	---
690	DEMIKU	SYC	---	---	---	---	---	---	---	---	---	---	---	---
721	INTERTUNA UNO	SYC	---	---	---	---	---	---	---	---	---	---	---	---
722	INTERTUNA DOS	SYC	---	---	---									
723	INTERTUNA TRES	SYC	---	---	---	---	---	---	---	---	---	---	---	---
738	TXORI AUNDI	SYC	---	---	---	---	---	---	---	---	---	---	---	---
739	ARTZA	SYC	---	---	---	---		---	---	---	---	---	---	---
764	DRACO	SYC	---	---	---	---	---	---	---	---	---			---
777	THAI UNION 1	THAI	---	---	---									
778	THAI UNION 2	THAI	---											
782	THAI UNION STAR	THAI	---											

FRA: France

ESP: Spain

SYC: Seychelles

MYT: Mayotte

THAI: Thailand

TABLE 6. Comparative statistics of catch by purse seiners by country in the Western Indian Ocean
Database closed on 04/04/11
(Units: MT)

Year 2009

MONTH	France	Spain	Seychelles	Others [*]	Total
Jan	8356	12214	7644	2587	30800
Feb	5485	8318	5382	3159	22345
Mar	8276	10627	5465	3313	27681
Apr	3592	5870	2578	1636	13676
May	3015	4916	2903	1574	12407
Jun	2282	3046	2614	1149	9091
Jul	3441	5955	3803	1167	14365
Aug	5562	19554	9879	4179	39175
Sep	5354	14759	8351	4839	33303
Oct	6311	7467	9153	3625	26556
Nov	2055	2953	4199	785	9992
Dec	4033	10606	6369	2318	23327
Total	57763	106286	68339	30330	262719

Year 2010

MONTH	France	Spain	Seychelles	Others [*]	Total
Jan	4008	14935	8571	2057	29571
Feb	3766	12960	8479	1817	27022
Mar	3676	9360	6561	1114	20711
Apr	3818	9496	4354	1237	18905
May	2859	7885	2450	746	13940
Jun	3615	9651	3627	1650	18543
Jul	3376	8163	6199	1140	18878
Aug	5491	11800	6669	1972	25932
Sep	4521	17435	6586	2154	30696
Oct	5161	16285	9548	1623	32617
Nov	3685	11661	8213	1512	25070
Dec	3126	7755	4530	1948	17359
Total	47102	137386	75787	18969	279244

^{*}Since space is a limiting factor in Tables 6, flag country appearing in these tables is included based on their catch totals. The remaining flags are classified under “OTHERS”. Flag countries with only one vessel are automatically placed under “OTHERS” to preserve the confidentiality of data pertaining to the vessel. In 2009 “OTHERS” included Italy, Mayotte and Thailand and in 2010 “OTHERS” included Mayotte and Thailand.

TABLE 7. Comparative statistics of effort by purse seiners by Country in the Western Indian Ocean
Database closed on 04/04/11
(Units: Fishing Day)

Year 2009

MONTH	France	Spain	Seychelles	Others [*]	Total
Jan	327	374	235	164	1099
Feb	302	329	207	188	1026
Mar	304	356	228	168	1055
Apr	266	327	159	169	920
May	268	301	171	144	883
Jun	242	240	173	149	805
Jul	178	323	218	154	873
Aug	170	341	204	178	893
Sep	172	334	203	170	879
Oct	175	297	204	185	859
Nov	179	233	195	125	732
Dec	181	360	235	134	911
Total	2762	3814	2432	1928	10936

Year 2010

MONTH	France	Spain	Seychelles	Others [*]	Total
Jan	195	357	245	110	906
Feb	168	270	195	79	712
Mar	202	327	190	70	789
Apr	188	323	180	75	767
May	185	288	172	44	688
Jun	121	306	143	81	651
Jul	157	305	186	64	712
Aug	201	356	213	75	845
Sep	174	330	185	97	786
Oct	162	339	214	83	798
Nov	168	312	204	84	769
Dec	212	365	196	123	896
Total	2132	3879	2323	985	9318

^{*} See footnote of table 6.

**TABLE 8. Comparative CPUE of purse seiners by country
in the Western Indian Ocean
Database closed on 04/04/11
(Units: MT/Fishing Day)**

Year 2009

MONTH	France	Spain	Seychelles	Others [*]	Total
Jan	25.59	32.65	32.58	15.81	28.03
Feb	18.15	25.31	25.97	16.78	21.77
Mar	27.24	29.87	23.94	19.78	26.23
Apr	13.53	17.98	16.23	9.68	14.87
May	11.26	16.33	17.00	10.94	14.05
Jun	9.42	12.68	15.09	7.72	11.30
Jul	19.34	18.46	17.43	7.55	16.45
Aug	32.81	57.26	48.49	23.45	43.87
Sep	31.05	44.16	41.23	28.44	37.87
Oct	36.16	25.17	44.93	19.64	30.90
Nov	11.47	12.69	21.50	6.28	13.65
Dec	22.31	29.43	27.05	17.29	25.61
Total	20.91	27.86	28.10	15.73	24.02

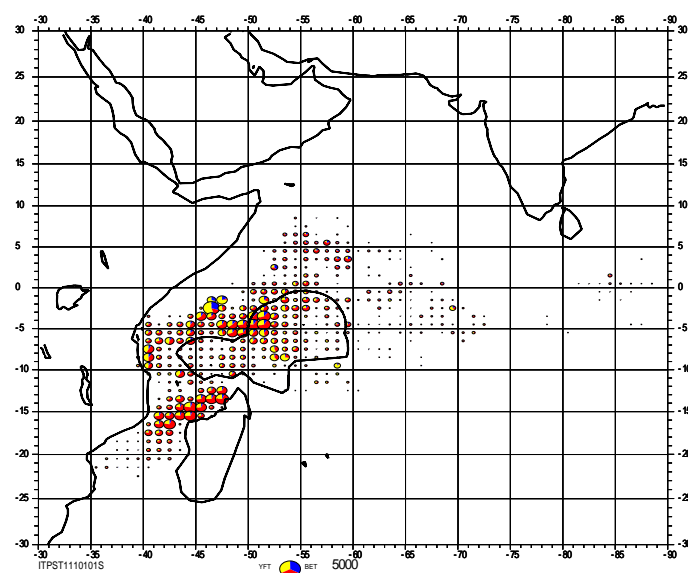
Year 2010

MONTH	France	Spain	Seychelles	Others [*]	Total
Jan	20.60	41.87	35.00	18.69	32.63
Feb	22.44	47.92	43.48	23.02	37.94
Mar	18.19	28.63	34.55	15.92	26.25
Apr	20.27	29.37	24.22	16.49	24.66
May	15.49	27.40	14.23	16.96	20.25
Jun	29.87	31.53	25.43	20.48	28.51
Jul	21.57	26.79	33.26	17.70	26.52
Aug	27.38	33.11	31.30	26.45	30.70
Sep	26.00	52.87	35.54	22.19	39.05
Oct	31.81	48.05	44.57	19.53	40.85
Nov	21.88	37.32	40.32	17.98	32.62
Dec	14.77	21.22	23.14	15.80	19.37
Total	22.10	35.42	32.63	19.26	29.97

^{*}See footnote of table 6.

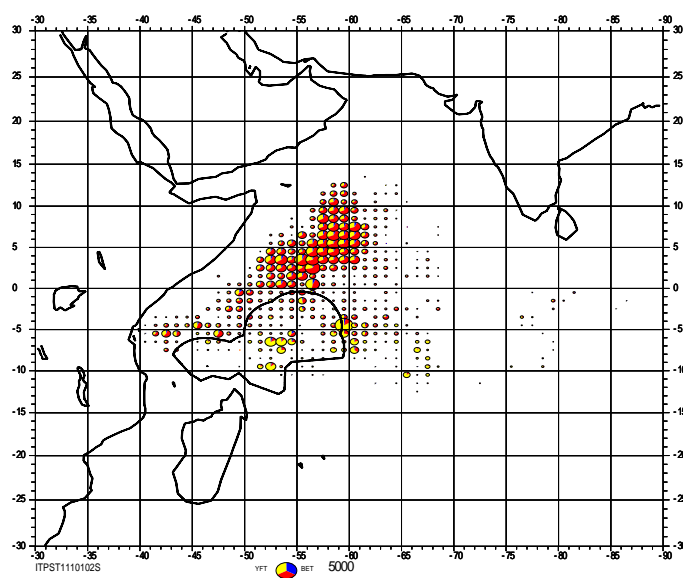
MAP 1.FISHING GROUNDS EXPLOITED BY PURSE SEINERS IN THE WESTERN INDIAN OCEAN BY 1° SQUARE

First Semester 2010



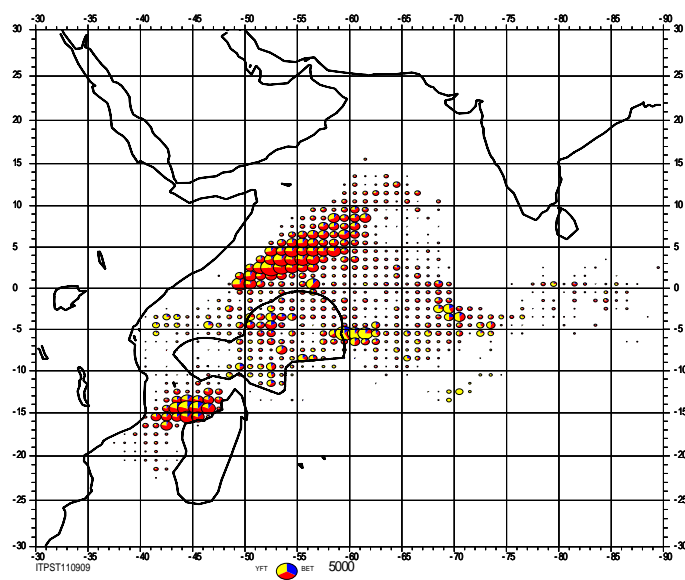
MAP 2. FISHING GROUNDS EXPLOITED BY PURSE SEINERS IN THE WESTERN INDIAN OCEAN BY 1° SQUARE

Second Semester 2010



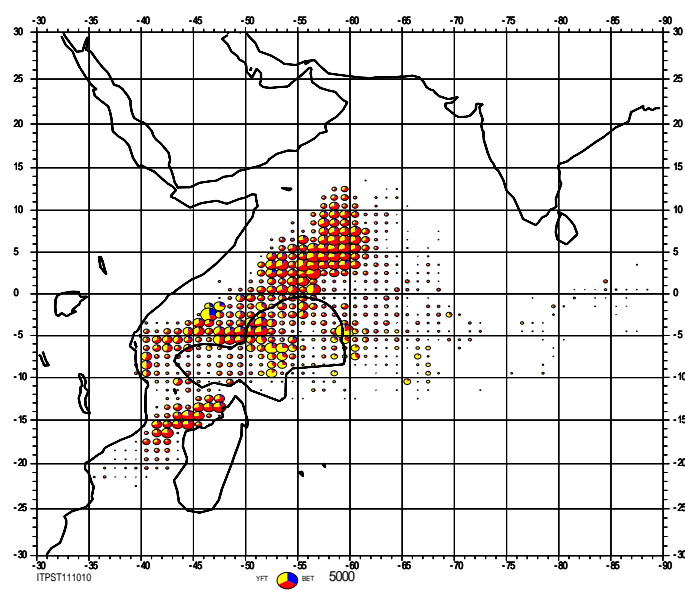
MAP 3. FISHING GROUNDS EXPLOITED BY PURSE SEINERS IN THE WESTERN INDIAN OCEAN BY 1° SQUARE

Whole Year 2009

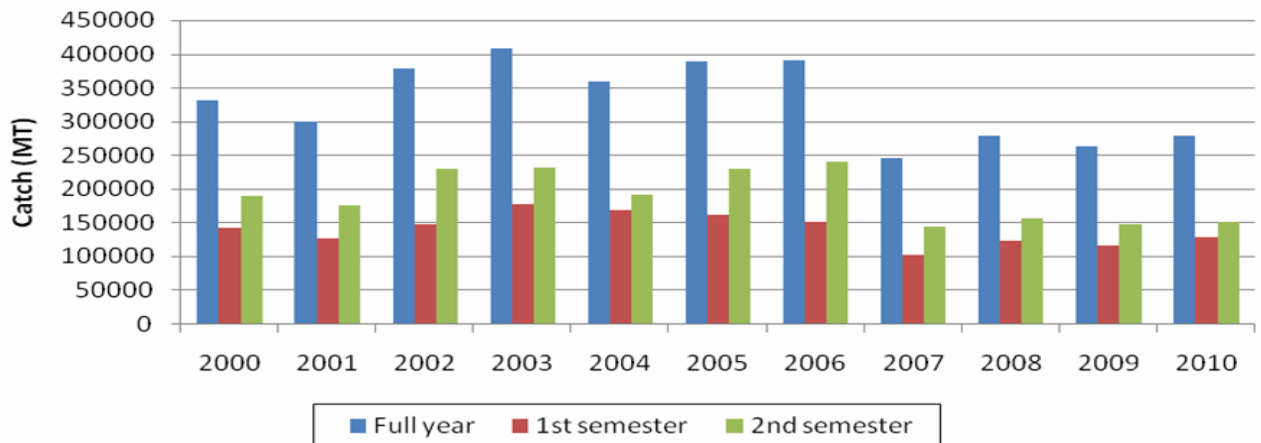


MAP 4. FISHING GROUNDS EXPLOITED BY PURSE SEINERS IN THE WESTERN INDIAN OCEAN BY 1° SQUARE

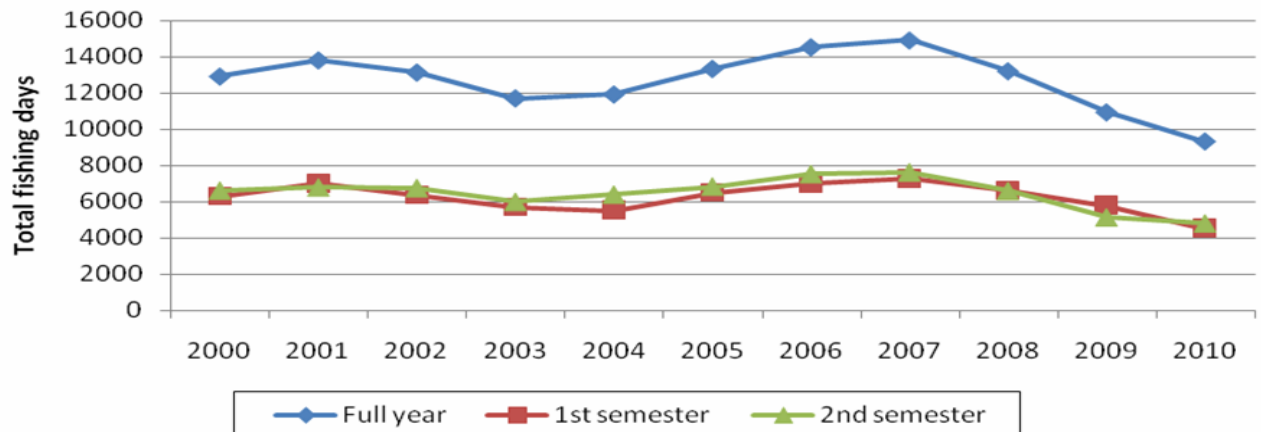
Whole Year 2010



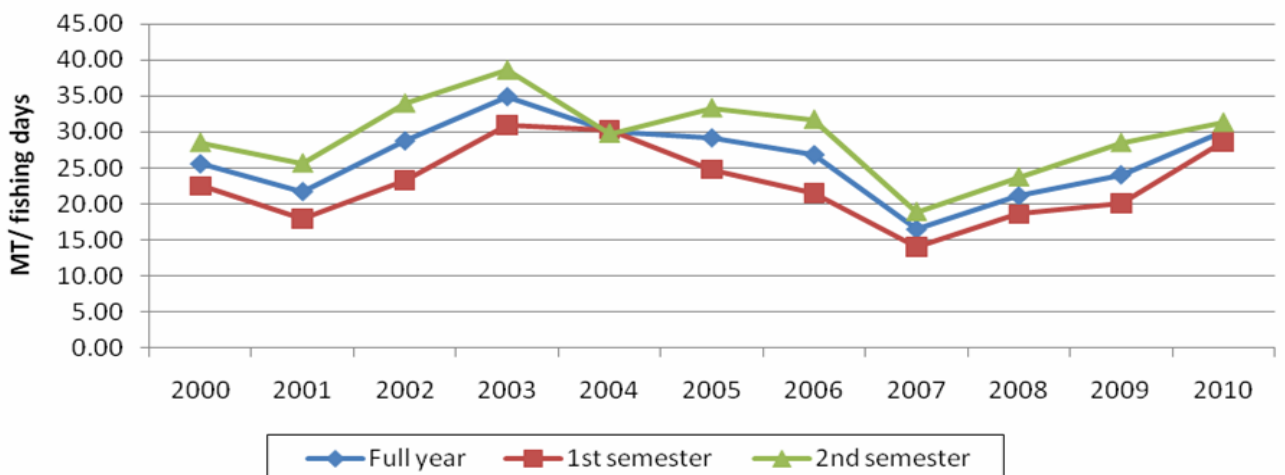
CATCH 2000-2010
PURSE SEINERS HOLDING SEYCHELLES LICENSE



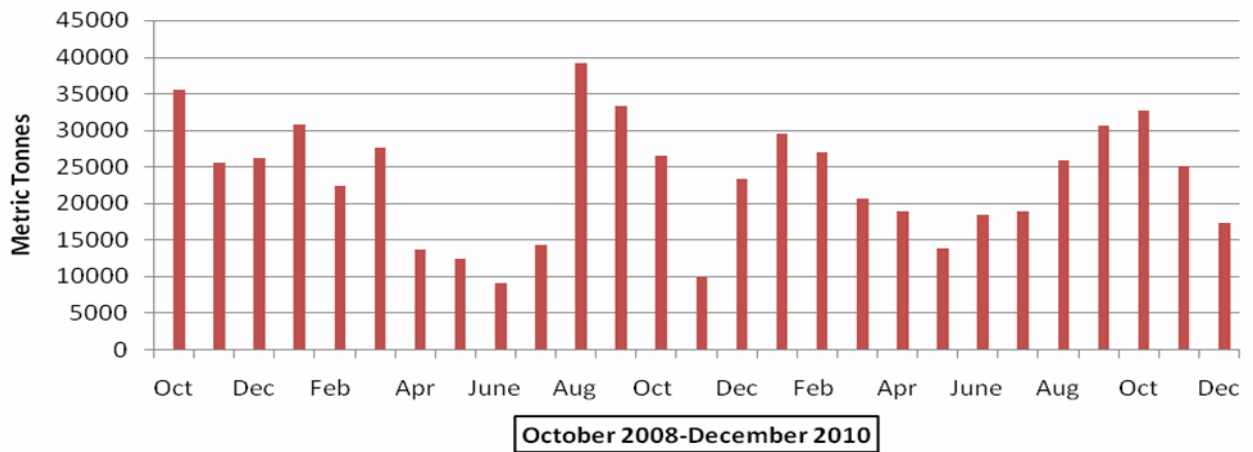
FISHING EFFORT 2000-2010
PURSE SEINERS HOLDING SEYCHELLES LICENSE



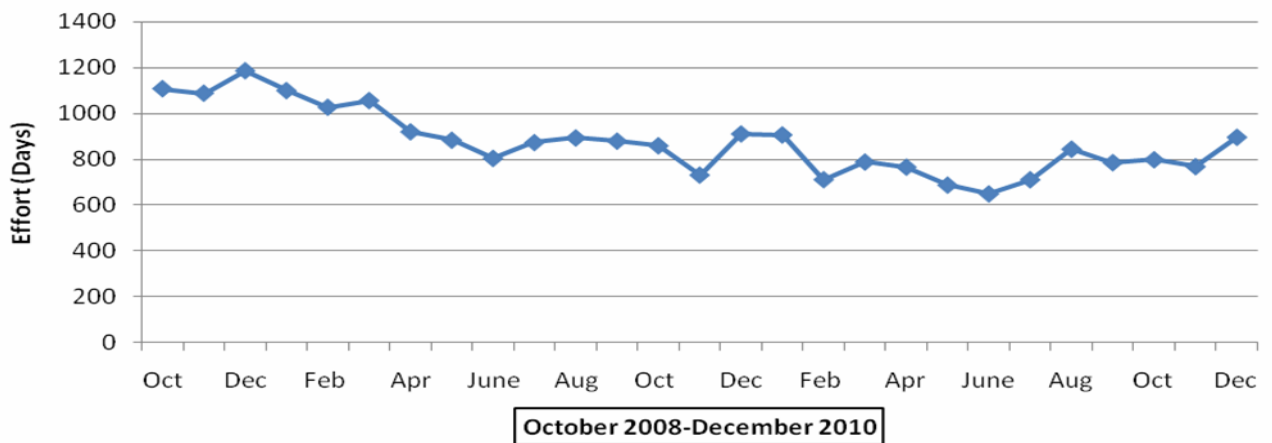
CPUE 2000-2010
PURSE SEINERS HOLDING SEYCHELLES LICENSE



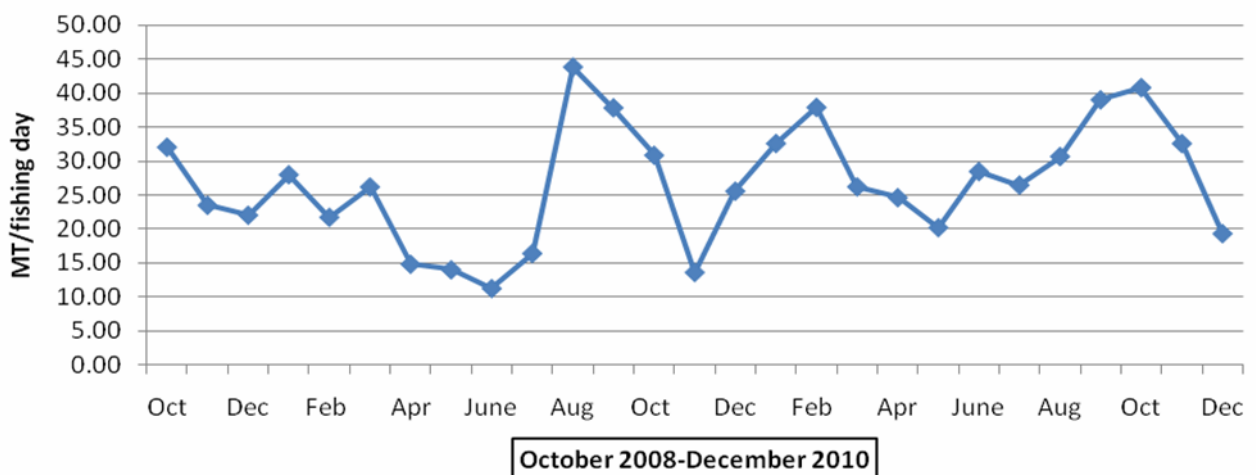
WIO CATCH:OCTOBER 2008-DECEMBER 2010
PURSE SEINERS



WIO EFFORT: OCTOBER 2008-DECEMBER 2010
PURSE SEINERS



WIO CPUE: OCTOBER 2008-DECEMBER 2010
PURSE SEINERS



Longline

Table 9 provides the summary of catch and effort reported by longliners licensed to operate inside of the Seychelles EEZ for the whole years 2009 and 2010.

Tables 10.1, 10.2, 10.3, 10.4, and 10.5 show the longliners' catch for the Seychelles, Japan, Taiwan POC, China and Republic of South Korea respectively.

Figure 7, 8 and 9 illustrate the catch, effort and CPUE of longliners from October 2008 to December 2010.

Maps 5 and 6 show the distribution of reported catch of longliners by 1° square in the WIO for the first and second semester of 2010 respectively.

Maps 7 and 8 illustrate the distribution of reported catches of longliners for the whole of 2009 and 2010 respectively.

TABLE 9.0 Summary of longliner catch in the Western Indian Ocean
Database closed on 04/04/11
(Units: catch Mt, percentage in brackets, catch rates Mt/1000 hooks)

Year: 2009

MONTH	VESSELS LICENSED	VESSELS COVERED	HOOKS	CATCH RATE	YELLOWFIN		BIGEYE		SWORDFISH		OTHERS		TOTAL	CUMUL
					Mt	%	Mt	%	Mt	%	Mt	%	MT	TOTAL
Jan	63	59	3585438	0.43	237	15	1011	66	88	6	202	13	1538	1538
Feb	68	72	3151638	0.31	197	20	496	51	66	7	220	22	979	2517
Mar	69	36	1940701	0.33	59	9	359	56	49	8	176	27	644	3161
Apr	68	60	2707310	0.46	93	7	506	41	64	5	585	47	1248	4409
May	39	28	2087687	0.57	39	3	396	33	76	6	683	57	1195	5604
Jun	33	26	1793510	0.44	25	3	282	36	78	10	406	51	791	6395
Jul	29	26	2121742	0.42	45	5	282	32	68	8	492	55	891	7287
Aug	24	21	1514838	0.42	44	7	194	30	50	8	350	55	642	7929
Sep	25	21	855060	0.34	23	8	110	38	33	12	120	42	288	8216
Oct	23	22	1484493	0.35	37	7	349	67	49	9	82	16	519	8735
Nov	18	25	1694463	0.35	37	6	446	75	25	4	86	15	595	9330
Dec	21	30	2310351	0.39	44	5	680	76	48	5	116	13	891	10221
	40	36	25247231	0.40	881	9	5112	50	694	7	3519	34	10221	

Year: 2010

MONTH	VESSELS LICENSED	VESSELS COVERED	HOOKS	CATCH RATE	YELLOWFIN		BIGEYE		SWORDFISH		OTHERS		TOTAL	CUMUL
					Mt	%	Mt	%	Mt	%	Mt	%	MT	TOTAL
Jan	22	31	2420280	0.34	42	5	607	75	54	7	106	13	811	811
Feb	21	27	1551139	0.32	32	6	332	66	40	8	97	19	502	1313
Mar	21	23	1566623	0.39	35	6	367	61	47	8	152	25	605	1918
Apr	17	24	1810714	0.43	55	7	351	45	48	6	315	41	775	2693
May	14	22	1559307	0.37	37	6	124	21	29	5	385	66	579	3272
Jun	9	19	1758921	0.36	42	7	165	26	30	5	394	62	634	3906
Jul	4	18	1684967	0.41	46	7	254	37	38	6	342	50	684	4590
Aug	4	15	1050722	0.39	24	6	154	38	36	9	193	47	410	5000
Sep	7	14	738832	0.39	44	15	115	40	18	6	110	38	287	5287
Oct	23	31	1691014	0.39	113	17	371	57	35	5	131	20	653	5940
Nov	38	48	3104145	0.43	204	15	879	66	48	4	196	15	1331	7271
Dec	43	51	3228884	0.41	165	12	885	67	63	5	206	16	1322	8593
	19	27	22165548	0.39	839	10	4604	54	486	6	2627	31	8593	

TABLE 10.1 Summary of longliner catch in the Western Indian Ocean
Database closed on 04/04/11
(Units: catch Mt, percentage in brackets, catch rates Mt/1000 hooks)

Country: SEYCHELLES

Year: 2009

MONTH	VESSELS	VESSELS	HOOKS	CATCH	YELLOWFIN		BIGEYE		SWORDFISH		OTHERS		TOTAL	CUMUL
	LICENSED	COVERED			Mt	%	Mt	%	Mt	%	Mt	%	MT	TOTAL
Jan	5	22	1754205	0.44	98	13	577	74	50	6	53	7	778	778
Feb	5	21	1383413	0.35	32	7	333	70	25	5	88	18	478	1256
Mar	5	24	1566740	0.34	29	5	302	56	45	8	164	30	540	1797
Apr	5	24	1782026	0.51	32	3	317	35	42	5	520	57	910	2706
May	5	26	2077847	0.57	39	3	395	33	76	6	682	57	1192	3898
Jun	1	26	1793510	0.44	25	3	282	36	78	10	406	51	791	4689
Jul	0	26	2121742	0.42	45	5	282	32	68	8	492	55	891	5581
Aug	0	21	1514838	0.42	44	7	194	30	50	8	350	55	642	6223
Sep	1	20	821768	0.34	21	8	102	37	32	12	120	43	276	6499
Oct	1	21	1396723	0.35	32	7	327	67	46	9	82	17	489	6988
Nov	4	23	1661086	0.35	33	6	436	75	24	4	86	15	579	7567
Dec	5	24	1997998	0.38	39	5	571	76	46	6	99	13	756	8323
4	23	19871895	0.42	468	6	4117	49	581	7	3142	38	8323		

Country: SEYCHELLES

Year: 2010

MONTH	VESSELS	VESSELS	HOOKS	CATCH	YELLOWFIN		BIGEYE		SWORDFISH		OTHERS		TOTAL	CUMUL
	LICENSED	COVERED			Mt	%	Mt	%	Mt	%	Mt	%	MT	TOTAL
Jan	5	24	1916214	0.34	28	4	499	76	46	7	86	13	660	660
Feb	5	22	1387258	0.33	22	5	302	67	36	8	90	20	451	1111
Mar	5	22	1554858	0.39	35	6	365	61	46	8	152	25	602	1713
Apr	4	24	1810714	0.43	55	7	351	45	48	6	315	41	775	2488
May	4	22	1559307	0.37	37	6	124	21	29	5	385	66	579	3067
Jun	1	19	1758921	0.36	42	7	165	26	30	5	394	62	634	3701
Jul	0	18	1684967	0.41	46	7	254	37	38	6	342	50	684	4385
Aug	0	15	1050722	0.39	24	6	154	38	36	9	193	47	410	4795
Sep	1	13	731968	0.39	42	15	113	40	18	6	109	39	284	5079
Oct	5	15	1023980	0.37	61	16	212	57	21	6	79	21	376	5455
Nov	8	20	1448790	0.38	68	12	385	70	26	5	71	13	552	6007
Dec	11	23	1688361	0.39	69	11	461	71	37	6	84	13	652	6659
4	20	17616060	0.38	529	8	3385	51	411	6	2300	35	6659		

TABLE 10.2 Summary of longliner catch in the Western Indian Ocean
Database closed on 04/04/11
(Units: catch Mt, percentage in brackets, catch rates Mt/1000 hooks)

Country: JAPAN

Year: 2009

MONTH	VESSELS	VESSELS	HOOKS	CATCH	YELLOWFIN		BIGEYE		SWORDFISH		OTHERS		TOTAL	CUMUL
	LICENSED	COVERED		RATE	Mt	%	Mt	%	Mt	%	Mt	%	MT	TOTAL
Jan	32	15	456861	0.47	68	31	70	32	11	5	68	31	217	217
Feb	33	23	1015459	0.31	134	42	68	21	25	8	90	28	317	534
Mar	31	6	293044	0.28	27	34	39	49	3	4	10	13	81	614
Apr	27	11	425946	0.37	45	29	63	40	13	8	36	23	156	770
May	1	1	3240	0.34	0	12	1	54	0	8	0	26	1	772
Jun	1	0	0	0.00	0	0	0	0	0	0	0	0	0	772
Jul	1	0	0	0.00	0	0	0	0	0	0	0	0	0	772
Aug	1	0	0	0.00	0	0	0	0	0	0	0	0	0	772
Sep	1	0	0	0.00	0	0	0	0	0	0	0	0	0	772
Oct	1	0	0	0.00	0	0	0	0	0	0	0	0	0	772
Nov	0	0	0	0.00	0	0	0	0	0	0	0	0	0	772
Dec	0	0	0	0.00	0	0	0	0	0	0	0	0	0	772
	13	11	2194550	0.35	274	36	241	31	52	7	205	27	772	

- Please note that no licenses were taken by longline fishing vessels from Japan during year 2010

TABLE 10.3 Summary of longliner catch in the Western Indian Ocean
Database closed on 04/04/11
(Units: catch Mt, percentage in brackets, catch rates Mt/1000 hooks)

Country: TAIWAN POC

Year: 2009

MONTH	VESSELS LICENSED	VESSELS COVERED	HOOKS	CATCH RATE	YELLOWFIN		BIGEYE		SWORDFISH		OTHERS		TOTAL	CUMUL
					Mt	%	Mt	%	Mt	%	Mt	%	MT	TOTAL
Jan	15	16	1163579	0.41	61	13	332	69	24	5	64	13	481	481
Feb	15	18	435068	0.24	7	7	65	63	10	9	22	21	103	584
Mar	19	5	66433	0.30	2	12	16	79	1	3	1	6	20	604
Apr	29	21	394238	0.37	12	8	104	71	8	6	22	15	146	750
May	26	0	0	0.00	0	0	0	0	0	0	0	0	0	750
Jun	24	0	0	0.00	0	0	0	0	0	0	0	0	0	750
Jul	22	0	0	0.00	0	0	0	0	0	0	0	0	0	750
Aug	21	0	0	0.00	0	0	0	0	0	0	0	0	0	750
Sep	21	1	33292	0.34	2	18	8	72	1	8	0	2	11	762
Oct	19	1	87770	0.34	5	18	22	73	3	9	0	0	30	791
Nov	12	2	33377	0.49	4	27	10	63	1	6	1	5	16	808
Dec	15	6	312353	0.43	5	4	109	81	2	2	18	13	134	942
	20	9	2526111	0.37	99	11	666	71	49	5	128	14	942	

Country: TAIWAN POC

Year: 2010

MONTH	VESSELS LICENSED	VESSELS COVERED	HOOKS	CATCH RATE	YELLOWFIN		BIGEYE		SWORDFISH		OTHERS		TOTAL	CUMUL
					Mt	%	Mt	%	Mt	%	Mt	%	MT	TOTAL
Jan	16	16	504065	0.30	14	10	108	72	8	5	20	13	151	151
Feb	15	18	163881	0.31	11	21	29	58	4	7	7	14	51	202
Mar	15	5	11765	0.24	0	16	1	39	1	35	0	9	3	205
Apr	12	21	0	0.00	0	0	0	0	0	0	0	0	0	205
May	9	0	0	0.00	0	0	0	0	0	0	0	0	0	205
Jun	7	0	0	0.00	0	0	0	0	0	0	0	0	0	205
Jul	3	0	0	0.00	0	0	0	0	0	0	0	0	0	205
Aug	3	0	0	0.00	0	0	0	0	0	0	0	0	0	205
Sep	5	1	6865	0.49	2	51	1	34	0	0	0	14	3	208
Oct	16	1	649834	0.41	52	19	152	57	14	5	50	19	268	476
Nov	28	2	1518405	0.47	133	19	447	62	22	3	114	16	716	1192
Dec	30	6	1468123	0.44	91	14	404	63	24	4	118	18	639	1831
	13	6	4322938	0.42	303	17	1142	62	73	4	309	17	1831	

TABLE 10.4 Summary of longliner catch in the Western Indian Ocean
Database closed on 04/04/11
(Units: catch Mt, percentage in brackets, catch rates Mt/1000 hooks)

Country: CHINA

Year: 2009

MONTH	VESSELS	VESSELS	HOOKS	CATCH	YELLOWFIN		BIGEYE		SWORDFISH		OTHERS		TOTAL	CUMUL
	LICENSED	COVERED		RATE	Mt	%	Mt	%	Mt	%	Mt	%	MT	TOTAL
Jan	4	5	204793	0.30	10	16	32	52	4	6	16	26	61	61
Feb	4	5	227539	0.27	19	31	23	38	5	9	14	22	61	123
Mar	4	0	0	0.00	0	0	0	0	0	0	0	0	0	123
Apr	4	3	63100	0.30	2	8	12	62	1	8	4	23	19	141
May	4	1	6600	0.36	0	12	1	45	1	26	0	17	2	144
Jun	4	0	0	0.00	0	0	0	0	0	0	0	0	0	144
Jul	3	0	0	0.00	0	0	0	0	0	0	0	0	0	144
Aug	1	0	0	0.00	0	0	0	0	0	0	0	0	0	144
Sep	1	0	0	0.00	0	0	0	0	0	0	0	0	0	144
Oct	1	0	0	0.00	0	0	0	0	0	0	0	0	0	144
Nov	1	0	0	0.00	0	0	0	0	0	0	0	0	0	144
Dec	0	0	0	0.00	0	0	0	0	0	0	0	0	0	144
	3	4	502032	0.29	30	21	68	47	11	8	34	24	144	

- Please note that no licenses were taken by longline fishing vessels from China during year 2010

TABLE 10.5 Summary of longliner catch in the Western Indian Ocean
Database closed on 04/04/11
(Units: catch Mt, percentage in brackets, catch rates Mt/1000 hooks)

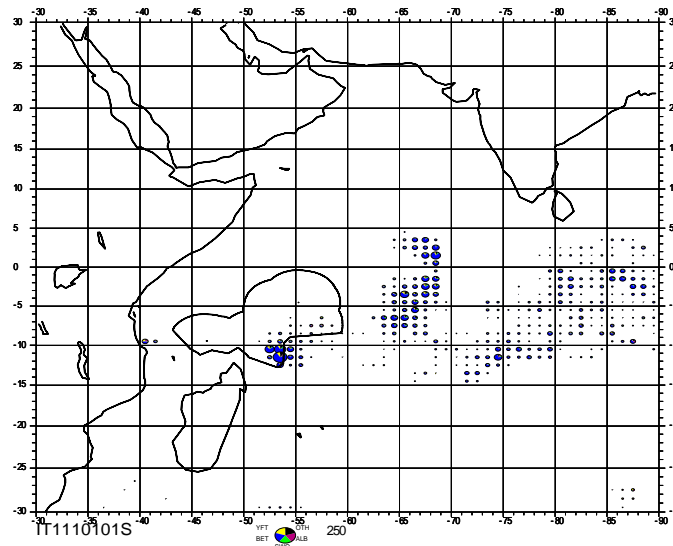
Country: REPUBLIC OF SOUTH KOREA Year: 2009

MONTH	VESSELS	VESSELS	HOOKS	CATCH	YELLOWFIN		BIGEYE		SWORDFISH		OTHERS		TOTAL	CUMUL
	LICENSED	COVERED		RATE	Mt	%	Mt	%	Mt	%	Mt	%	MT	TOTAL
Jan	0	0	0	0.00	0	0	0	0	0	0	0	0	0	0
Feb	7	3	55735	0.19	5	48	3	26	1	5	2	21	11	11
Mar	7	1	14484	0.20	0	12	2	61	0	5	1	22	3	14
Apr	0	0	0	0.00	0	0	0	0	0	0	0	0	0	14
May	0	0	0	0.00	0	0	0	0	0	0	0	0	0	14
Jun	0	0	0	0.00	0	0	0	0	0	0	0	0	0	14
Jul	0	0	0	0.00	0	0	0	0	0	0	0	0	0	14
Aug	0	0	0	0.00	0	0	0	0	0	0	0	0	0	14
Sep	0	0	0	0.00	0	0	0	0	0	0	0	0	0	14
Oct	0	0	0	0.00	0	0	0	0	0	0	0	0	0	14
Nov	0	0	0	0.00	0	0	0	0	0	0	0	0	0	14
Dec	0	0	0	0.00	0	0	0	0	0	0	0	0	0	14
	7	3	70219	0.19	6	40	5	33	1	5	3	21	14	

- Please note that no licenses were taken by longline fishing vessels from Republic of South Korea during year 2010

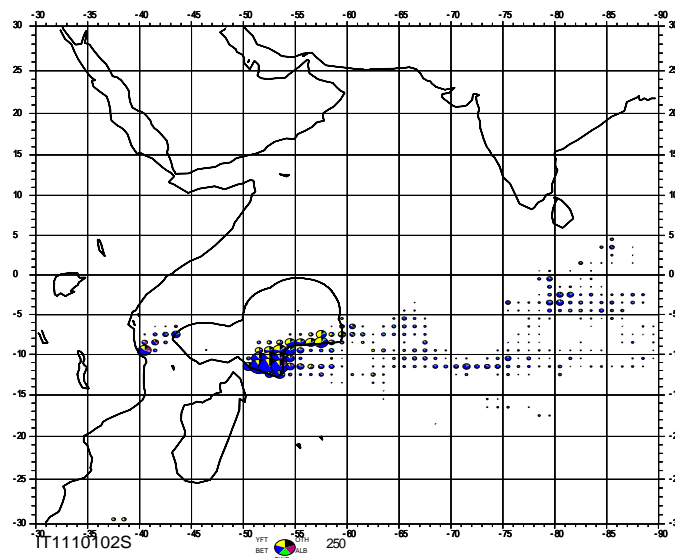
**MAP 5. FISHING GROUNDS EXPLOITED BY LONGLINERS IN THE
WESTERN INDIAN OCEAN BY 1° SQUARE**

First semester 2010



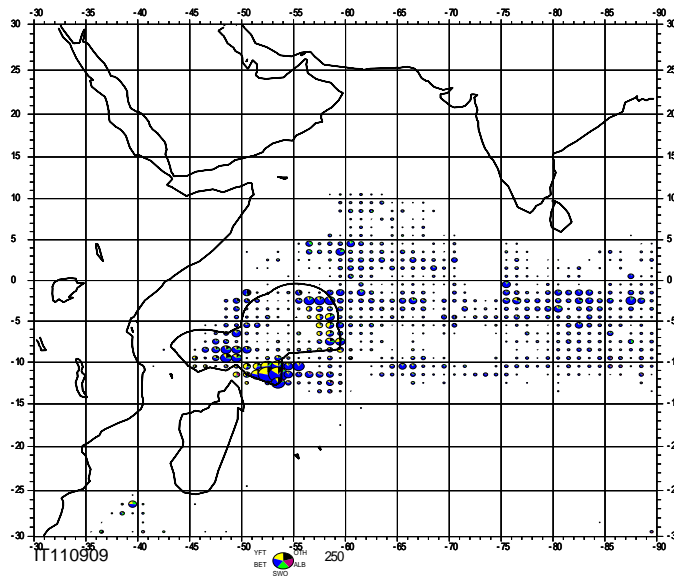
**MAP 6. FISHING GROUNDS EXPLOITED BY LONGLINERS IN THE
WESTERN INDIAN OCEAN BY 1° SQUARE**

Second semester 2010



**MAP 7. FISHING GROUNDS EXPLOITED BY LONGLINERS IN THE
WESTERN INDIAN OCEAN BY 1° SQUARE**

Whole year 2009



**MAP 8. FISHING GROUNDS EXPLOITED BY LONGLINERS IN THE
WESTERN INDIAN OCEAN BY 1° SQUARE**

Whole year 2010

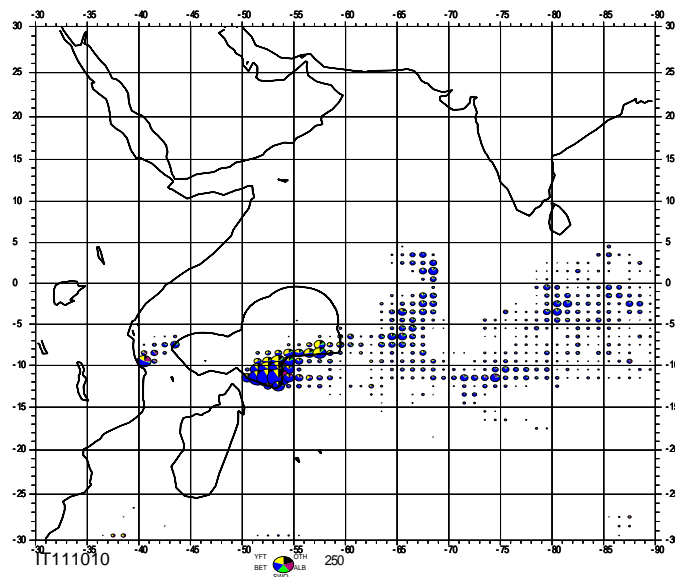


FIGURE 7
CATCH: LAST 27 MONTHS
ALL LONGLINERS LICENSED IN SEYCHELLES

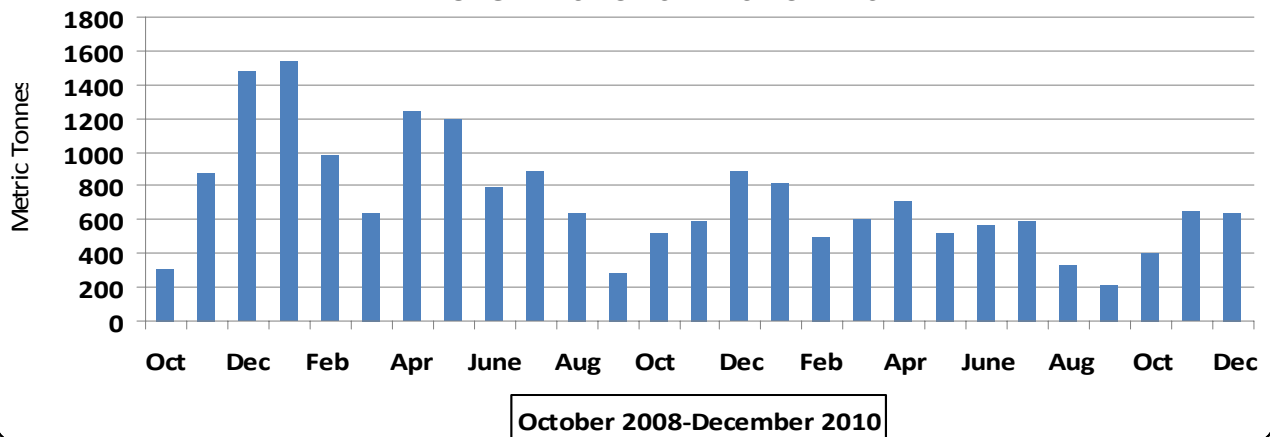


FIGURE 8
EFFORT: LAST 27 MONTHS
ALL LONGLINERS LICENSED IN SEYCHELLES

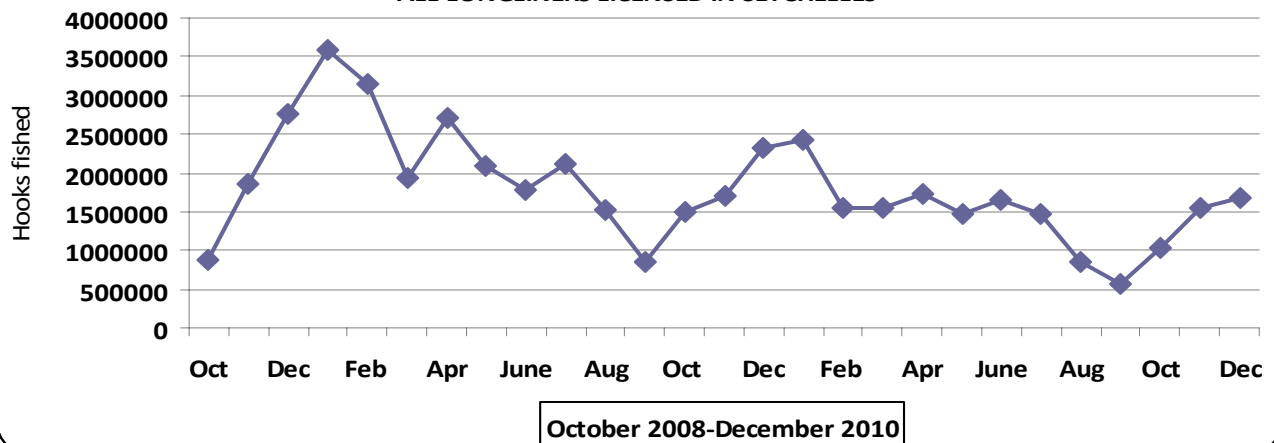


FIGURE 9
CPUE: LAST 27 MONTHS
ALL LONGLINERS LICENSED IN SEYCHELLES

