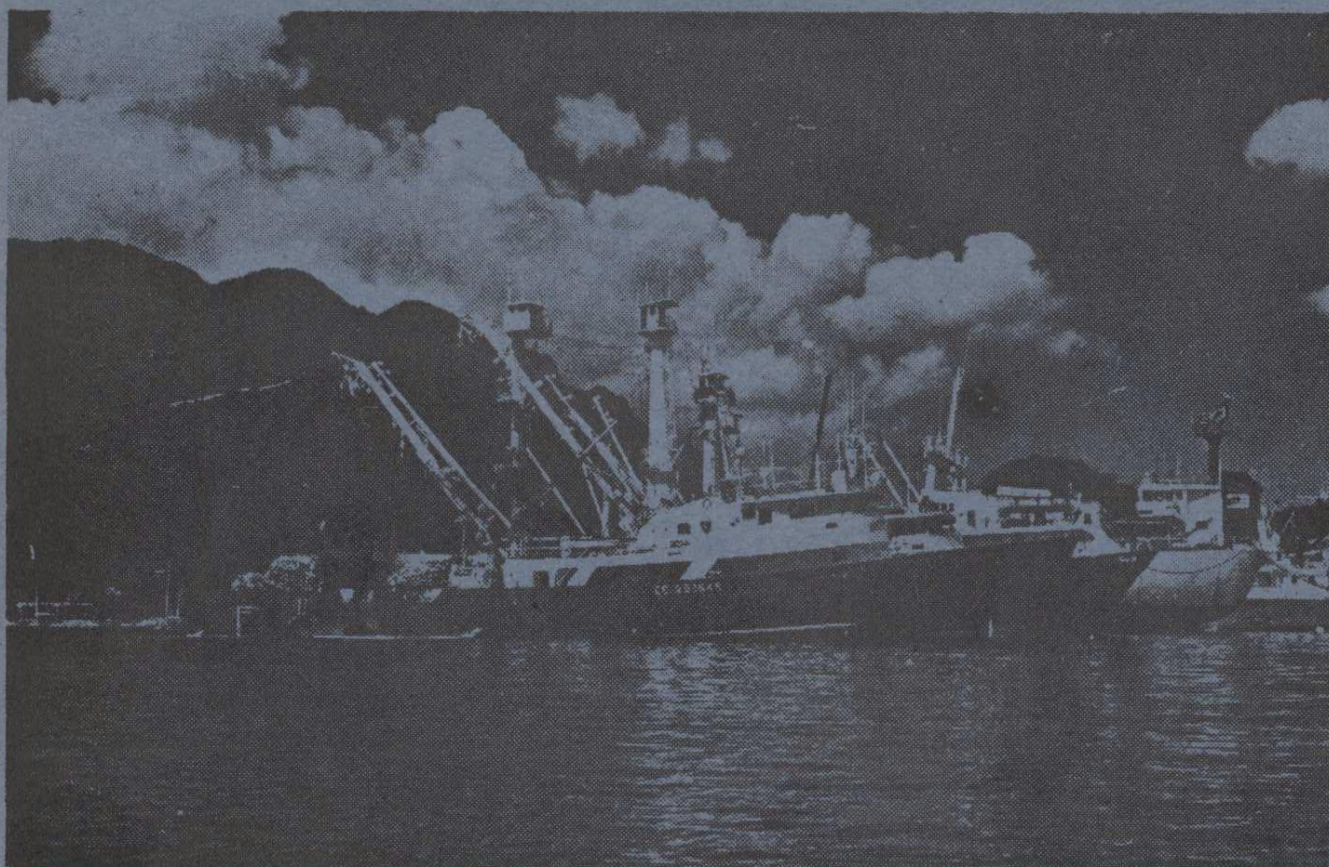


# SEYCHELLES FISHING AUTHORITY

## TUNA BULLETIN



Year 2009

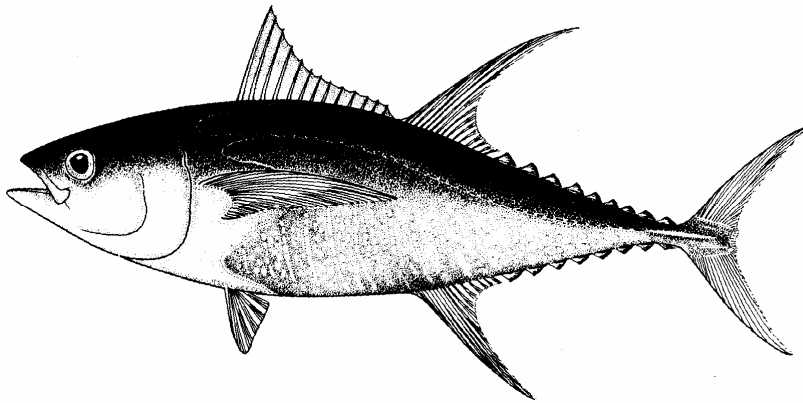


## SEYCHELLES FISHING AUTHORITY

P.O. Box 449  
Fishing Port  
Mahé  
Seychelles  
Tel: (+248) 4 670300  
Fax: (+248) 224508  
Email: [management@sfa.sc](mailto:management@sfa.sc)

## SEYCHELLES TUNA BULLETIN

**Year 2009**



Prepared by: **SEYCHELLES FISHING AUTHORITY**



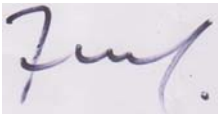
## **SEYCHELLES FISHING AUTHORITY**

The Seychelles Fishing Authority (SFA) was incorporated in August 1984 by the Seychelles Fishing Authority (Establishment) Act. This body was formed in view of the need to develop the fishing industry to its fullest potential. It is a parastatal organisation with autonomous legal and financial status, supervised by a board of directors appointed by the President.

The Ministry of Investment, Natural Resources and Industry is responsible for policy directives in fisheries related matters, and SFA is the executive arm of the government in all fisheries activities. Responsibilities include:

- assessment and management of the fisheries resources;
- assistance in conducting negotiations with foreign fishing fleet operators;
- coordination and support of fishing ventures and owner/operators;
- management of the fishing port;
- development of gear technology;
- coordination of manpower training in the fishing sector;

This volume of the Tuna Bulletin contains fisheries statistics in the Western Indian Ocean (WIO) reported by purse seiners and longliners licensed to fish inside of the Seychelles EEZ for years 2008 and 2009.



Finley Racombo  
Chief Executive Officer

## SUMMARY

Data used to generate the tables and figures presented here are based on daily catch and effort forms (logbooks) returned from fishing vessels that are licensed to fish in the Seychelles EEZ and for purse seiners, as well as from data collected via the tuna sampling programme conducted during transshipment in Port Victoria. Sometimes there are delays in these being received at SFA, especially for longliners that often spend up to a year at sea, and for purse seiners the delays are usually during and just after the second quarter of the year when most vessels are fishing in the Mozambique Channel and are not necessarily using Port Victoria for transshipment.

Readers should note that many of the figures presented for longline fishing vessel are subject to revision (usually upwards) as more data become available. The closing date for compilation of data prior to the generation of the statistical tables is shown at the head of each table.

## PURSE SEINERS

### PRINCIPAL POINTS

- The total catch reported by purse seiners licensed in Seychelles during the year 2008 was 278,956 MT. This was achieved by an average of 45 vessels active per months and a fishing effort of 13,223 fishing days giving a mean catch rate of 21.10 MT/fishing days.
- The purse seine tuna catch reported for the Western Indian Ocean during the first semester of 2009 was 116,000 MT obtained from a fishing effort of 5,789 fishing days, this giving a mean catch rate of 20.04 MT/fishing days. This represents a decrease of 5 % in catches from the 122,413 MT recorded during the same period in 2008.
- During the second semester of 2009, a total of 146,718 MT of tuna was caught from a fishing effort of 5,148 fishing days. This represents a 6 % decrease in total catch over the same period in 2008. The mean catch rate recorded during the second semester of 2009 was 28.50 MT/fishing days compared to 23.71 MT/fishing day recorded during the same period in 2008.
- The total purse seine tuna catches for the year 2009 was estimated at 262,719 MT representing a decrease of 6% or 16,238 MT of tuna below the total catch recorded in 2008. This was achieved by an average of 38 vessels active per month and fishing effort of 10,936 fishing days. Thus the mean catch rate for 2009 was estimated at 24.02 MT/fishing days.

Table I. Species composition of the total catch reported for the year 2008 and 2009.

SPECIES	2008	%	2009	%
YELLOWFIN ( <i>Thunnus albacares</i> )	112,724	40	84,821	32
SKIPJACK ( <i>Katsuwonus pelamis</i> )	137,330	49	150,420	57
BIGEYE ( <i>Thunnus obesus</i> )	26,951	10	26,987	10
OTHERS	1,952	1	491	1
<b>TOTAL</b>	278,956		262,719	

During 2009, skipjack tuna dominated the catch accounting for 57% of the total catch followed by yellowfin tuna (32%) and bigeye tuna (10%). Catches of Skipjack, and bigeye tuna increased by 10 % and 0.1 % respectively, whilst that of yellowfin tuna decreased by 25 %.

Readers should note that the catch composition recorded by fishermen in their daily catch and effort reports were corrected based on scientific sampling carried out during transshipment or landing in Port Victoria.

1. Table 3 shows purse seine transshipment or landing statistics by harbour.
2. It should be noted that the figures represent the transshipment or landing of vessels whose trips ENDED in the month indicated and NOT the actual month of physical transshipment or landing of the catch.
  - During the first semester of 2009, transshipment and landing through Port Victoria amounted to 72,197 MT representing 62 % of the total catch. For the same period in 2008 a total of 99,081 MT (81 % of the total catch) was unloaded in Port Victoria. This represents a decrease of 27 % in total tuna transhipped/landed during the first semester of 2009 over the same period in 2008 (table 3).
  - During the second semester of 2009, a decrease of 8 % was recorded in total tuna transhipped/landed in Port Victoria compared to the same period of the previous year. A total of 139,398 MT, 95 % of the total catch was unloaded here compared to 151, 172 MT for the same period for 2008.
  - For the whole of 2009, a total of 211,595 MT of tuna was transhipped/ landed in Port Victoria compared to 250,253 MT in 2008. This represents 81% of the total catch for the year 2009 and a decrease of 15 % from the previous year.

## LONGLINERS

### PRINCIPAL POINTS

Readers should be aware that the longliners statistics represent only a small sample of the total longliners activity in the WIO because:

- Not all longliners in the WIO have a licence to fish in the Seychelles EEZ and therefore are under no obligation to report to SFA.
- Some Distant Water Fishing Nations (DWFN) provide SFA with log sheets covering their activity in the whole Indian Ocean while others confine their reports to the Seychelles EEZ.

Since the duration of licences can vary from one month to twelve months, for comparison purposes, each month covered in a logbook was considered as one logbook.

The statistics published for 2008 are related to 948 logbooks (months) or 84 % logbook received at the time when statistical tables were generated. A total of 136 licenses were issued to 122 vessels in 2008. During 2009, a total of 604 logbooks (months) or 81% logbook were received, for the 112 licences issued to 93 vessels.

Analysis of data collected to date show that:

- The total catch reported for the whole year 2008 was 11,806 MT obtained from a fishing effort of 30 million hooks, thus giving a mean catch rate of 0.39 MT/1000 hooks.
- During the first semester of 2009, a total catch of 6,395 MT was reported, compared to 7,441 MT for the same period in 2008 representing a decrease of 14 %. This was achieved from a fishing effort of 15.3 million hooks giving a mean catch rate of 0.42 MT/1000 hooks. The mean catch rate for the same period in 2008 was 0.36 MT/1000 hooks.
- During the second semester of 2009 a total catch of 3,826 MT was reported compared to 4,365 MT for 2008. A total of 9.9 million hooks were set during that period giving a mean catch rate of 0.38 MT/1000 hooks compared to 0.46 MT/hooks, which was recorded during the same period the previous year.
- For the whole of 2009, a total catch of 10,221 MT was reported representing a decrease of 13 % in catches when compared to the year 2008. The 2009 catches were achieved from a fishing effort of approximately 25.3 million hooks giving a mean catch rate of 0.40 MT/1000 hooks compared to 0.39 MT/1000 hooks for 2008.
- For the whole year 2009, yellowfin tuna, bigeye tuna and swordfish recorded significant decrease of 52 %, 25 % and 19 % respectively. Bigeye tuna dominated the catch accounting for 50% of the total catch whilst yellowfin tuna accounted for only 9 % of the total catch.

Table II. Species composition of the total catch reported for the year 2008 and 2009.

<b>SPECIES</b>	<b>2008</b>	<b>%</b>	<b>2009</b>	<b>%</b>
YELLOWFIN ( <i>Thunnus albacares</i> )	1,833	<b>16</b>	881	<b>9</b>
BIGEYE ( <i>Thunnus obesus</i> )	6,832	<b>58</b>	5,112	<b>50</b>
SWORDFISH ( <i>Xiphias gladius</i> )	862	<b>7</b>	694	<b>7</b>
OTHERS	2279	<b>19</b>	3,534	<b>34</b>
<b>TOTAL</b>	<b>11,806</b>		<b>10,221</b>	

Map 5 to 8 show fishing grounds exploited by longliners during the year 2008 and 2009. The overall catch distribution pattern is relatively similar for both years.

## Definitions of terms used

TERMS	DEFINITION
VESSELS LICENSED	Vessels licensed to fish in the Seychelles EEZ.
VESSELS FISHED	Vessels whose logbook has been received at SFA and which contains at least one DAY FISHED for the month in question.
VESSELS COVERED	Vessels for which a logbook has been received containing at least one fishing day during the month; or a vessel that is not fishing yet the SFA knows of its activities.
FISHING DAYS	Days spent at sea minus days on passage, days adrift due to mechanical breakdown or other work stoppage. This may include days spent in searching even if no fish was actually caught or days spent drifting by flotsam or fish aggregating devices (FADs).
CATCH	MT - Metric Tonne (1000 kg)
CATCH RATE - Purse seine	Metric Tonne per fishing day
CATCH RATE - Longline	Metric tonne/1000 hooks
TRANSSHIPMENT and LANDING	Generally the transfer of tuna fish from a catcher vessel to a 'reefer' or transport vessel. This normally takes place in port. This also includes fish landed in Port Victoria, Seychelles for the IOT canning factory. Most of this is subsequently re-exported.
COUNTRY OF REGISTRATION	Country in which ownership of the vessel is registered.
FLAG	Country and agreement under which the vessel is managed. Country and Flag are usually the same but can sometimes be different.



## PURSE SEINERS

Table 1 shows the catch and effort statistics for all purse seiners combined. Table 2.1 shows statistics for the Spanish fleet. Table 2.2 shows statistics for the French fleet. Table 2.3 statistics for Seychelles fleet and Table 2.4 statistics for "Others" which represents the other nationalities combined. The "Vessels Licensed" may exceed the "Vessels Covered" column if vessels licensed to fish in a particular month have not reported their catch, for whatever reason, by the time the database was closed prior to generation of these tables. This closing date is shown in the heading of each table. If vessels, which have not fished in the Seychelles EEZ and are not licensed to do so, report fishing OUTSIDE the EEZ, then "Vessels Covered" may sometimes exceed "Vessels Licensed".

The total catch for each trip has been taken from records of transshipment and landings whenever complete unloading occurred in Seychelles or the record was otherwise available from another port; otherwise total catch has been estimated from logbooks containing daily catch and effort statistics. The species composition declared in the logbooks has been corrected based on data collected during the tuna-sampling program conducted during transshipment and landings in Port Victoria. Catches have been estimated in wet weight rather than dry weight.

- The Spanish fleet reported the highest amount of tuna caught during the year 2009 with a reported catch of 106,286 MT. This represents a slight decrease of 13 % over the 121, 522 MT reported during the same period of the previous year.
- Likewise, the French fleet recorded a decrease of 23 % in their total catch during 2009. A total catch of 57,763 MT was reported for that year compared to 75,131 MT during the year 2008.
- The Seychelles fleet reported a total catch of 68,339 MT representing an increase of 21 % over the 56,382 MT reported in 2008.
- The remaining 30,330 MT of tuna caught during 2009 were taken by vessels from other countries. They have been classified as "Other". (See footnote of Table 6 for details).

Maps 1 and 2 show the distribution of reported catch of purse seiner by 1° square in the WIO for the first and second semester of 2009 respectively.

Maps 3 and 4 illustrate the distribution of reported catches of purse seiner for the whole of 2008 and 2009 respectively.

**TABLE 1. Catch Statistics for Purse Seiners in the Western Indian Ocean**  
**Database closed on 04/04/11**  
**(Units: catch MT, percentages in brackets, catch rates MT/fishing day)**

**Year: 2008**

	VESSELS	VESSELS	DAYS	CATCH	YELLOWFIN		SKIPJACK		BIGEYE		ALBACORE		Total	CUMMUL
MONTH	LICENSED	COVERED	FISHED	RATE	Mt	%	Mt	%	Mt	%	Mt	%	MT	TOTAL
Jan	54	46	1301	21.63	21525	76	3566	13	2646	9	400	1	28143	28143
Feb	51	46	1129	19.72	17117	77	2162	10	2934	13	45	0	22258	50400
Mar	55	49	1207	18.07	10445	48	8105	37	2655	12	596	3	21808	72208
Apr	55	44	1007	17.98	6731	37	9817	54	1210	7	335	2	18104	90313
May	55	46	1001	21.92	4004	18	16826	77	1073	5	23	0	21943	112255
Jun	55	45	977	10.40	4324	43	5146	51	662	7	16	0	10158	122413
Jul	55	46	1150	5.05	3064	53	1681	29	956	16	110	2	5810	128223
Aug	55	45	1197	25.24	6907	23	20168	67	3006	10	0	0	30210	158433
Sep	55	46	875	37.98	6809	20	23085	69	3291	10	15	0	33229	191662
Oct	55	43	1107	32.09	8750	25	22599	64	4010	11	16	0	35525	227187
Nov	55	44	1088	23.54	8159	32	14838	58	2585	10	2	0	25601	252788
Dec	55	44	1185	22.08	14889	57	9338	36	1921	7	17	0	26168	278956
	<b>55</b>	<b>45</b>	<b>13223</b>	<b>21.10</b>	<b>112724</b>	<b>40</b>	<b>137330</b>	<b>49</b>	<b>26951</b>	<b>10</b>	<b>1574</b>	<b>1</b>	<b>278956</b>	

**Year: 2009**

	VESSELS	VESSELS	DAYS	CATCH	YELLOWFIN		SKIPJACK		BIGEYE		ALBACORE		Total	CUMMUL
MONTH	LICENSED	COVERED	FISHED	RATE	Mt	%	Mt	%	Mt	%	Mt	%	MT	TOTAL
Jan	55	45	1099	28.03	12802	42	13537	44	4432	14	18	0	30800	30800
Feb	49	44	1026	21.77	9166	41	9751	44	3401	15	4	0	22345	53145
Mar	48	41	1055	26.23	5888	21	18296	66	3451	12	35	0	27681	80825
Apr	44	40	920	14.87	3270	24	8954	65	1401	10	51	0	13676	94502
May	42	37	883	14.05	2804	23	8420	68	1123	9	60	0	12407	106909
Jun	41	37	805	11.30	3716	41	4306	47	897	10	171	2	9091	116000
Jul	38	36	873	16.45	6944	48	5749	40	1624	11	45	0	14365	130365
Aug	38	35	893	43.87	10060	26	25625	65	3468	9	21	0	39175	169540
Sep	35	36	879	37.87	8941	27	21355	64	3002	9	0	0	33303	202843
Oct	34	37	859	30.90	7010	26	17969	68	1562	6	0	0	26556	229399
Nov	33	36	732	13.65	3270	33	5965	60	757	8	0	0	9992	239391
Dec	33	36	911	25.61	10949	47	10494	45	1869	8	15	0	23327	262719
	<b>41</b>	<b>38</b>	<b>10936</b>	<b>24.02</b>	<b>84821</b>	<b>32</b>	<b>150420</b>	<b>57</b>	<b>26987</b>	<b>10</b>	<b>421</b>	<b>0</b>	<b>262719</b>	

**TABLE 2.1. Statistics for Purse Seiners in the Western Indian Ocean by Country**  
**Database closed on 04/04/11**  
**(Units: catch MT, percentages in brackets, catch rates MT/fishing day)**

**Country: SPAIN                      Year: 2008**

	VESSELS	VESSELS	DAYS	CATCH	YELLOWFIN	SKIPJACK	BIGEYE	ALBACORE	Total	CUMMUL				
MONTH	LICENSED	COVERED	FISHED	RATE	Mt	%	Mt	%	Mt	%	Mt	%	MT	TOTAL
Jan	22	16	460	23.33	8010	75	1579	15	1042	10	84	1	10721	10721
Feb	19	16	383	24.36	6845	73	1229	13	1244	13	21	0	9340	20061
Mar	19	16	445	20.72	3632	39	4186	45	1357	15	41	0	9216	29277
Apr	19	16	376	22.82	2551	30	5443	63	544	6	40	0	8584	37861
May	19	15	378	29.17	1894	17	8583	78	533	5	6	0	11027	48888
Jun	19	16	388	8.92	1190	34	1976	57	299	9	0	0	3465	52353
Jul	19	16	401	6.08	1249	51	686	28	414	17	92	4	2440	54793
Aug	19	15	418	33.82	2776	20	9806	69	1439	10	0	0	14126	68919
Sep	19	15	339	40.12	2650	19	9624	71	1311	10	2	0	13617	82536
Oct	19	15	409	39.97	3820	23	10634	65	1869	11	0	0	16343	98879
Nov	19	15	392	24.87	2386	24	6143	63	1214	12	0	0	9742	108621
Dec	19	15	423	30.50	7542	58	4377	34	980	8	2	0	12901	121522
	19	16	4812	25.25	44544	37	64266	53	12247	10	288	0	121522	

**Country: SPAIN                      Year: 2009**

	VESSELS	VESSELS	DAYS	CATCH	YELLOWFIN	SKIPJACK	BIGEYE	ALBACORE	Total	CUMMUL				
MONTH	LICENSED	COVERED	FISHED	RATE	Mt	%	Mt	%	Mt	%	Mt	%	MT	TOTAL
Jan	19	15	374	32.65	4352	36	5921	48	1939	16	2	0	12214	12214
Feb	16	14	329	25.31	2504	30	4473	54	1319	16	0	0	8318	20531
Mar	16	14	356	29.87	2066	19	7170	67	1386	13	1	0	10627	31158
Apr	16	13	327	17.98	1245	21	4064	69	559	10	1	0	5870	37029
May	16	12	301	16.33	1099	22	3325	68	492	10	0	0	4916	41944
Jun	16	11	240	12.68	924	30	1776	58	346	11	0	0	3046	44991
Jul	16	12	323	18.46	2446	41	2815	47	693	12	0	0	5955	50946
Aug	16	13	341	57.26	4937	25	12916	66	1701	9	0	0	19554	70500
Sep	16	13	334	44.16	3930	27	9493	64	1335	9	0	0	14759	85259
Oct	16	13	297	25.17	1937	26	5120	69	411	5	0	0	7467	92727
Nov	16	13	233	12.69	1041	35	1650	56	262	9	0	0	2953	95680
Dec	16	13	360	29.43	4878	46	4935	47	779	7	15	0	10606	106286
	16	13	3814	27.86	31359	30	63658	60	11224	11	19	0	106286	

**TABLE 2.2. Statistics for Purse Seiners in the Western Indian Ocean by Country**  
**Database closed on 04/04/11**  
**(Units: catch MT, percentages in brackets, catch rates MT/fishing day)**

**Country: FRANCE                      Year: 2008**

	VESSELS	VESSELS	DAYS	CATCH	YELLOWFIN	SKIPJACK	BIGEYE	ALBACORE	Total	CUMMUL				
MONTH	LICENSED	COVERED	FISHED	RATE	Mt	%	Mt	%	Mt	%	Mt	%	MT	TOTAL
Jan	17	17	464	22.56	8013	77	1155	11	1042	10	255	2	10465	10465
Feb	17	17	402	15.30	5007	81	296	5	824	13	20	0	6147	16612
Mar	17	17	404	16.21	4021	61	1500	23	567	9	457	7	6545	23157
Apr	17	14	344	14.70	2640	52	1990	39	229	5	200	4	5059	28216
May	17	16	326	18.23	1224	21	4458	75	247	4	6	0	5934	34150
Jun	17	16	295	12.53	1944	53	1568	42	166	4	12	0	3700	37850
Jul	17	16	410	4.50	992	54	637	35	214	12	2	0	1845	39695
Aug	17	16	422	13.95	2172	37	3142	53	572	10	0	0	5887	45581
Sep	17	16	244	37.42	2179	24	5930	65	1022	11	0	0	9132	54713
Oct	17	13	299	20.77	2162	35	3266	53	788	13	0	0	6216	60930
Nov	17	14	317	24.06	3395	45	3628	48	598	8	0	0	7621	68550
Dec	17	14	328	20.07	3914	59	2240	34	427	6	0	0	6581	75131
	17	16	4254	17.66	37663	50	29811	40	6696	9	952	1	75131	

**Country: FRANCE                      Year: 2009**

	VESSELS	VESSELS	DAYS	CATCH	YELLOWFIN	SKIPJACK	BIGEYE	ALBACORE	Total	CUMMUL				
MONTH	LICENSED	COVERED	FISHED	RATE	Mt	%	Mt	%	Mt	%	Mt	%	MT	TOTAL
Jan	17	14	327	25.59	4653	56	2679	32	1024	12	0	0	8356	8356
Feb	14	14	302	18.15	2514	46	2071	38	900	16	0	0	5485	13841
Mar	14	12	304	27.24	2085	25	5210	63	960	12	21	0	8276	22117
Apr	14	13	266	13.53	1053	29	2064	57	459	13	15	0	3592	25709
May	14	12	268	11.26	988	33	1775	59	197	7	56	2	3015	28724
Jun	14	13	242	9.42	1650	72	368	16	93	4	171	7	2282	31006
Jul	14	9	178	19.34	1999	58	1101	32	309	9	32	1	3441	34447
Aug	14	7	170	32.81	1478	27	3588	65	496	9	0	0	5562	40009
Sep	14	8	172	31.05	1444	27	3426	64	482	9	0	0	5354	45363
Oct	14	8	175	36.16	1649	26	4294	68	368	6	0	0	6311	51675
Nov	14	9	179	11.47	691	34	1207	59	157	8	0	0	2055	53729
Dec	14	9	181	22.31	2220	55	1524	38	289	7	0	0	4033	57763
	14	11	2762	20.91	22424	39	29305	51	5735	10	295	1	57763	

**TABLE 2.3 Statistics for Purse Seiners in the Western Indian Ocean by Country**  
**Database closed on 04/04/11**  
**(Units: catch MT, percentages in brackets, catch rates MT/fishing day)**

**Country: SEYCHELLES                      Year: 2008**

	VESSELS	VESSELS	DAYS	CATCH	YELLOWFIN	SKIPJACK	BIGEYE	ALBACORE	Total	CUMMUL				
MONTH	LICENSED	COVERED	FISHED	RATE	Mt	%	Mt	%	Mt	%	Mt	%	MT	TOTAL
Jan	12	10	291	16.78	3937	81	509	10	374	8	59	1	4878	4878
Feb	12	10	276	20.43	4318	77	616	11	704	12	3	0	5641	10519
Mar	12	10	216	15.34	1396	42	1441	44	431	13	36	1	3309	13828
Apr	12	8	152	9.54	258	18	1099	76	75	5	18	1	1455	15283
May	12	9	172	14.39	486	20	1874	76	107	4	1	0	2473	17757
Jun	12	8	198	10.27	885	44	1027	51	119	6	0	0	2032	19788
Jul	12	10	258	3.67	512	54	176	19	247	26	11	1	946	20734
Aug	12	9	252	33.05	1590	19	5954	71	767	9	0	0	8334	29068
Sep	12	9	174	42.42	1323	18	5440	74	607	8	0	0	7371	36439
Oct	12	9	236	43.33	2138	21	6898	68	1049	10	0	0	10214	46652
Nov	12	9	224	25.90	1482	26	3734	64	578	10	0	0	5794	52447
Dec	12	9	250	15.72	2357	60	1268	32	311	8	0	0	3936	56382
	12	9	2698	20.89	20681	37	30036	53	5369	10	128	0	56382	

**Country: SEYCHELLES                      Year: 2009**

	VESSELS	VESSELS	DAYS	CATCH	YELLOWFIN	SKIPJACK	BIGEYE	ALBACORE	Total	CUMMUL				
MONTH	LICENSED	COVERED	FISHED	RATE	Mt	%	Mt	%	Mt	%	Mt	%	MT	TOTAL
Jan	12	9	235	32.58	2528	33	3983	52	1115	15	7	0	7644	7644
Feb	12	9	207	25.97	2719	51	1920	36	743	14	0	0	5382	13026
Mar	11	8	228	23.94	1025	19	3713	68	719	13	1	0	5465	18491
Apr	11	7	159	16.23	490	19	1923	75	164	6	1	0	2578	21069
May	9	7	171	17.00	459	16	2226	77	218	7	0	0	2903	23972
Jun	8	7	173	15.09	820	31	1478	57	316	12	0	0	2614	26586
Jul	5	8	218	17.43	1934	51	1355	36	512	13	0	0	3803	30388
Aug	5	8	204	48.49	2594	26	6378	65	906	9	0	0	9879	40268
Sep	3	8	203	41.23	2177	26	5441	65	732	9	0	0	8351	48618
Oct	2	9	204	44.93	2452	27	6147	67	553	6	0	0	9153	57771
Nov	1	8	195	21.50	1255	30	2656	63	288	7	0	0	4199	61970
Dec	1	9	235	27.05	2877	45	2937	46	554	9	1	0	6369	68339
	7	8	2432	28.10	21330	31	40156	59	6821	10	10	0	68339	

**TABLE 2.4 Statistics for Purse Seiners in the Western Indian Ocean by Country**  
**Database closed on 04/04/11**  
**(Units: catch MT, percentages in brackets, catch rates MT/fishing day)**

**Country: OTHER COUNTRIES Year: 2008**

	VESSELS	VESSELS	DAYS	CATCH	YELLOWFIN	SKIPJACK	BIGEYE	ALBACORE	Total	CUMMUL				
MONTH	LICENSED	COVERED	FISHED	RATE	Mt	%	Mt	%	Mt	%	Mt	%	MT	TOTAL
Jan	3	3	87	23.90	1565	75	323	16	189	9	2	0	2079	2079
Feb	3	3	68	16.70	946	84	20	2	162	14	1	0	1130	3209
Mar	7	6	142	19.22	1397	51	979	36	300	11	62	2	2737	5946
Apr	7	6	134	22.41	1283	43	1285	43	362	12	77	3	3006	8952
May	7	6	125	20.00	400	16	1911	76	187	7	10	0	2509	11461
Jun	7	5	95	10.08	304	32	575	60	79	8	4	0	962	12422
Jul	7	4	80	7.20	311	54	182	32	81	14	5	1	579	13002
Aug	7	5	105	17.77	369	20	1266	68	228	12	0	0	1863	14865
Sep	7	6	118	26.40	656	21	2090	67	351	11	12	0	3110	17974
Oct	7	6	163	16.86	630	23	1800	65	304	11	16	1	2752	20726
Nov	7	6	155	15.73	897	37	1332	55	195	8	2	0	2444	23170
Dec	7	6	184	14.95	1077	39	1453	53	203	7	15	1	2751	25921
<b>6</b>	<b>5</b>	<b>1458</b>	<b>17.78</b>	<b>9835</b>	<b>38</b>	<b>13217</b>	<b>51</b>	<b>2640</b>	<b>10</b>	<b>207</b>	<b>1</b>	<b>25921</b>		

**Country: OTHER COUNTRIES Year: 2009**

	VESSELS	VESSELS	DAYS	CATCH	YELLOWFIN	SKIPJACK	BIGEYE	ALBACORE	Total	CUMMUL				
MONTH	LICENSED	COVERED	FISHED	RATE	Mt	%	Mt	%	Mt	%	Mt	%	MT	TOTAL
Jan	7	7	164	15.81	1269	49	954	37	354	14	8	0	2587	2587
Feb	7	7	188	16.78	1429	45	1288	41	439	14	4	0	3159	5746
Mar	7	7	168	19.78	712	21	2203	66	387	12	12	0	3313	9059
Apr	3	7	169	9.68	481	29	903	55	218	13	33	2	1636	10695
May	3	6	144	10.94	257	16	1096	70	217	14	4	0	1574	12269
Jun	3	6	149	7.72	322	28	684	60	142	12	0	0	1149	13418
Jul	3	7	154	7.55	565	48	478	41	110	9	13	1	1167	14584
Aug	3	7	178	23.45	1050	25	2742	66	365	9	21	1	4179	18763
Sep	2	7	170	28.44	1391	29	2994	62	452	9	0	0	4839	23602
Oct	2	7	185	19.64	972	27	2408	66	230	6	0	0	3625	27227
Nov	2	6	125	6.28	283	36	453	58	49	6	0	0	785	28012
Dec	2	5	134	17.29	974	42	1098	47	246	11	0	0	2318	30330
<b>4</b>	<b>7</b>	<b>1928</b>	<b>15.73</b>	<b>9707</b>	<b>32</b>	<b>17301</b>	<b>57</b>	<b>3207</b>	<b>11</b>	<b>97</b>	<b>0</b>	<b>30330</b>		



**TABLE 3. Purse Seiner Transshipment Statistics by Harbour of Transshipment**  
**Database closed on 04/04/11**  
**(Units: catch MT)**

**Port: VICTORIA, SEYCHELLES    Year: 2008**

MONTH	NO. OF						Total	CUMMUL
	SEINERS	YELLOWFIN	SKIPJACK	BIGEYE	ALBACORE	OTHERS		TOTAL
Jan	46	21109	3566	2620	381	6	27682	27682
Feb	46	16391	2043	2836	45	0	21314	48996
Mar	44	8022	7212	2149	417	6	17806	66803
Apr	39	5173	8249	1062	299	11	14793	81596
May	37	1549	6347	562	11	5	8474	90070
Jun	43	4038	4346	613	4	10	9011	99081
Jul	46	3064	1681	956	110	0	5810	104891
Aug	43	6754	19675	2923	0	128	29481	134372
Sep	40	6200	21468	3020	15	30	30732	165104
Oct	42	8525	21854	3889	16	151	34436	199540
Nov	43	8135	14757	2578	2	17	25489	225029
Dec	43	14087	9238	1879	17	3	25224	250253
	<b>43</b>	<b>103048</b>	<b>120436</b>	<b>25086</b>	<b>1317</b>	<b>367</b>	<b>250253</b>	

**Port: VICTORIA, SEYCHELLES    Year : 2009**

MONTH	NO. OF						Total	CUMMUL
	SEINERS	YELLOWFIN	SKIPJACK	BIGEYE	ALBACORE	OTHERS		TOTAL
Jan	41	11419	12257	4049	18	11	27753	27753
Feb	38	6717	6677	2358	4	24	15780	43534
Mar	25	1428	3526	731	27	0	5712	49245
Apr	23	1790	4168	786	43	0	6787	56033
May	24	1765	4921	862	4	0	7552	63585
Jun	32	3432	4172	873	135	1	8612	72197
Jul	35	6784	5680	1592	45	3	14105	86301
Aug	35	9588	24429	3293	21	0	37331	123633
Sep	34	8474	20257	2840	0	5	31576	155209
Oct	35	6673	17036	1487	0	6	25202	180411
Nov	32	3152	5768	733	0	0	9653	190064
Dec	33	10480	9405	1630	15	0	21530	211594
	<b>32</b>	<b>71700</b>	<b>118298</b>	<b>21234</b>	<b>312</b>	<b>50</b>	<b>211594</b>	

**Port: DIEGO SUAREZ, MADAGASCAR****Year: 2008**

MONTH	N0. OF						Total	CUMMUL
	SEINERS	YELLOWFIN	SKIPJACK	BIGEYE	ALBACORE	OTHERS		TOTAL
Jan	1	416	0	27	19	0	461	461
Feb	2	331	29	28	0	0	388	849
Mar	8	1326	626	180	139	0	2271	3120
Apr	10	1215	1373	124	13	0	2725	5845
May	20	2395	10279	499	12	11	13196	19041
Jun	14	271	769	47	12	0	1099	20140
Jul	0	0	0	0	0	0	0	20140
Aug	3	76	267	48	0	0	391	20531
Sep	3	397	1024	173	0	0	1594	22125
Oct	0	0	0	0	0	0	0	22125
Nov	0	0	0	0	0	0	0	22125
Dec	1	642	72	33	0	0	748	22872
	<b>5</b>	<b>7069</b>	<b>14440</b>	<b>1157</b>	<b>195</b>	<b>11</b>	<b>22872</b>	

**Port: DIEGO SUAREZ, MADAGASCAR****Year: 2009**

MONTH	N0. OF						Total	CUMMUL
	SEINERS	YELLOWFIN	SKIPJACK	BIGEYE	ALBACORE	OTHERS		TOTAL
Jan	5	297	433	135	0	0	865	865
Feb	17	1714	2595	853	0	0	5161	6027
Mar	31	3947	13297	2461	6	10	19721	25748
Apr	19	1056	3532	350	2	1	4941	30689
May	14	378	1412	89	0	0	1879	32568
Jun	1	1	8	1	0	0	10	32578
Jul	0	0	0	0	0	0	0	32578
Aug	0	0	0	0	0	0	0	32578
Sep	1	195	538	77	0	0	810	33388
Oct	1	74	213	13	0	0	300	33688
Nov	0	0	0	0	0	0	0	33688
Dec	2	220	197	53	0	0	469	34157
	<b>8</b>	<b>7881</b>	<b>22224</b>	<b>4032</b>	<b>8</b>	<b>11</b>	<b>34157</b>	

**Port: MOMBASA, KENYA****Year: 2008**

MONTH	N0. OF						CUMMUL	
	SEINERS	YELLOWFIN	SKIPJACK	BIGEYE	ALBACORE	OTHERS	Total	TOTAL
Jan	0	0	0	0	0	0	0	0
Feb	1	177	75	36	0	0	288	288
Mar	1	502	73	183	0	0	758	1046
Apr	1	257	29	11	5	0	302	1348
May	0	0	0	0	0	0	0	1348
Jun	0	0	0	0	0	0	0	1348
Jul	0	0	0	0	0	0	0	1348
Aug	0	0	0	0	0	0	0	1348
Sep	0	0	0	0	0	0	0	1348
Oct	0	0	0	0	0	0	0	1348
Nov	0	0	0	0	0	0	0	1348
Dec	1	0	0	0	0	0	0	1348
	<b>0</b>	<b>936</b>	<b>177</b>	<b>230</b>	<b>5</b>	<b>0</b>	<b>1348</b>	

**Port: MOMBASA, KENYA****Year: 2009**

MONTH	N0. OF						CUMMUL	
	SEINERS	YELLOWFIN	SKIPJACK	BIGEYE	ALBACORE	OTHERS	Total	TOTAL
Jan	1	340	248	68	0	0	656	656
Feb	1	20	32	9	0	0	61	717
Mar	0	0	0	0	0	0	0	717
Apr	0	0	0	0	0	0	0	717
May	0	0	0	0	0	0	0	717
Jun	1	131	72	14	0	0	217	933
Jul	1	161	68	32	0	0	261	1194
Aug	2	472	1196	175	0	0	1843	3037
Sep	1	68	199	24	0	0	290	3327
Oct	0	0	0	0	0	0	0	3327
Nov	0	0	0	0	0	0	0	3327
Dec	0	0	0	0	0	0	0	3327
	<b>1</b>	<b>1192</b>	<b>1815</b>	<b>320</b>	<b>0</b>	<b>0</b>	<b>3327</b>	

**Port: PORT LOUIS, MAURITIUS****Year: 2008**

MONTH	N0. OF						Total	CUMMUL
	SEINERS	YELLOWFIN	SKIPJACK	BIGEYE	ALBACORE	OTHERS		TOTAL
Jan	0							0
Feb	2	219	15	34	0	0	267	267
Mar	3	595	195	143	40	0	973	1240
Apr	4	86	166	14	18	0	284	1524
May	3	60	200	13	0	0	273	1797
Jun	2	15	30	2	0	0	48	1845
Jul	1	0	0	0	0	0	0	1845
Aug	2	76	226	36	0	0	338	2183
Sep	5	212	593	98	0	0	902	3085
Oct	3	224	745	120	0	0	1089	4174
Nov	1	24	80	8	0	0	112	4286
Dec	2	160	27	10	0	0	196	4483
	<b>2</b>	<b>1671</b>	<b>2276</b>	<b>478</b>	<b>58</b>	<b>0</b>	<b>4483</b>	

**Port: PORT LOUIS, MAURITIUS****Year: 2009**

MONTH	N0. OF						Total	CUMMUL
	SEINERS	YELLOWFIN	SKIPJACK	BIGEYE	ALBACORE	OTHERS		TOTAL
Jan	4	745	600	180	0	0	1525	1525
Feb	5	714	446	181	0	0	1342	2868
Mar	4	514	1473	259	2	0	2248	5115
Apr	14	379	1099	226	5	0	1710	6825
May	11	659	2079	172	56	0	2966	9791
Jun	5	152	50	10	37	0	249	10040
Jul	1	0	0	0	0	0	0	10040
Aug	0	0	0	0	0	0	0	10040
Sep	2	204	361	61	0	1	627	10667
Oct	2	137	375	35	0	0	547	11214
Nov	3	0	0	0	0	0	0	11214
Dec	0	0	0	0	0	0	0	11214
	<b>4</b>	<b>3505</b>	<b>6484</b>	<b>1124</b>	<b>100</b>	<b>1</b>	<b>11214</b>	

**TABLE 4. Purse Seiners Active in the Western Indian Ocean by Country of registration**  
**Database closed on 04/04/11**

**Year 2008**

Country	Jan	Feb	Mar	Apr	May	Jun	Jul	Aug	Sep	Oct	Nov	Dec
Spain	16	16	16	16	15	16	16	15	15	15	15	15
France	17	17	17	14	16	16	16	16	16	13	14	14
Italy	1	1	1	1	1	1	1	1	1	1	1	1
Mayotte	2	2	2	2	2	2	2	2	2	2	2	2
Seychelles	10	10	10	8	9	8	10	9	9	9	9	9
Thailand			3	3	3	2	1	2	3	3	3	3
	<b>46</b>	<b>46</b>	<b>49</b>	<b>44</b>	<b>46</b>	<b>45</b>	<b>46</b>	<b>45</b>	<b>46</b>	<b>43</b>	<b>44</b>	<b>44</b>

**Year 2009**

Country	Jan	Feb	Mar	Apr	May	Jun	Jul	Aug	Sep	Oct	Nov	Dec
Spain	15	14	14	13	12	11	12	13	13	13	13	13
France	14	14	12	13	12	13	9	7	8	8	9	9
Italy	1	1	1	1	1	1	1	1	1	1	1	
Mayotte	2	2	2	2	1	2	2	2	2	2	2	2
Seychelles	9	9	8	7	7	7	8	8	8	9	8	9
Thailand	4	4	4	4	4	3	4	4	4	4	3	3
	<b>45</b>	<b>44</b>	<b>41</b>	<b>40</b>	<b>37</b>	<b>37</b>	<b>36</b>	<b>35</b>	<b>36</b>	<b>37</b>	<b>36</b>	<b>36</b>

**TABLE 5. Purse Seiners Active in the Western Indian Ocean**  
**Database closed on 04/04/11**

**Year: 2008**

Vessel Code	Purse Seiner	Country	Jan	Feb	Mar	Apr	May	Jun	Jul	Aug	Sep	Oct	Nov	Dec
214	ALBACORA 4	ESP	---	---	---	---		---	---	---	---	---	---	---
454	FELIPE RUANO	ESP	---	---	---	---	---	---	---	---	---	---	---	---
458	CAMPOLIBRE ALAI	ESP	---	---	---	---		---	---	---	---	---	---	---
488	TXORI BERRI	ESP	---	---	---	---	---	---	---	---	---	---	---	---
507	PLAYA DE BAKIO	ESP	---	---	---	---	---	---	---	---	---	---	---	---
530	ELAI ALAI	ESP	---	---	---	---	---	---	---	---	---	---	---	---
568	ZUBEROA	ESP	---	---	---	---	---							
570	DONIENE	ESP	---	---	---	---	---	---	---					
615	PLAYA DE ANZORAS	ESP	---	---	---	---	---	---	---	---	---	---	---	---
629	TXORI TOKI	ESP	---	---	---	---	---	---	---	---	---	---	---	---
700	PLAYA DE ARITZATXU	ESP	---	---	---	---	---	---	---	---	---	---	---	---
711	ALBACAN	ESP	---	---	---	---	---	---	---	---	---	---	---	---
742	TXORI ARGÍ	ESP	---	---	---	---	---	---	---	---	---	---	---	---
743	ALBATUN DOS	ESP	---	---	---	---	---	---	---	---	---	---	---	---
750	IZURDIA	ESP	---	---	---	---	---	---	---	---	---	---	---	---
762	ALAKRANA	ESP	---	---	---	---	---	---	---	---	---	---	---	---
775	TXORI GORRI	ESP					---	---	---	---	---	---	---	---
482	VIA AVENIR	FRA	---	---	---	---	---	---	---	---	---	---	---	---
483	CAP BOJADOR	FRA	---	---	---	---	---	---	---	---	---			
490	GUEOTEC	FRA	---	---	---	---	---	---	---	---	---	---	---	---
491	AVEL VOR	FRA	---	---	---		---	---	---	---	---			
492	GUERIDEN	FRA	---	---	---	---	---	---	---	---	---	---	---	---
502	VIA MISTRAL	FRA	---	---	---	---	---	---	---	---	---	---	---	---
551	VIA EUROS	FRA	---	---	---	---	---	---	---	---	---	---	---	---
572	AVEL VAD	FRA	---	---	---	---	---	---	---	---	---	---	---	---
600	CAP SAINTE MARIE	FRA	---	---		---	---	---	---	---	---	---	---	---
679	MEN GOE	FRA	---	---	---	---	---	---	---	---	---			
693	TALENDUIC	FRA	---	---	---		---	---	---	---	---	---	---	---
703	STERENN 2	FRA	---	---	---	---	---	---	---	---	---	---	---	---
706	CAP SAINT VINCENT 2	FRA	---	---	---		---	---	---	---	---	---	---	---
707	MEN CREN	FRA	---	---	---	---	---	---	---	---	---	---	---	---
760	GLENAN	FRA	---	---	---	---	---	---	---	---	---	---	---	---
769	LE TITAN	FRA	---	---	---	---	---	---	---	---	---	---	---	---
771	TAKAMAKA	FRA	---	---	---									
595	TORRE GIULIA	ITA	---	---	---	---	---	---	---	---	---	---	---	---
767	TREVIÑON	MYT	---	---	---	---	---	---	---	---	---	---	---	---
770	DRENNEC	MYT	---	---	---	---	---	---	---	---	---	---	---	---
680	XIXILI	SYC	---	---	---	---	---		---	---	---	---	---	---
682	ERROXAPE	SYC	---	---	---	---	---	---	---	---	---	---	---	---
690	DEMIKU	SYC	---	---	---	---	---	---	---	---	---	---	---	---
721	INTERTUNA UNO	SYC	---	---	---	---	---	---	---	---	---	---	---	---
722	INTERTUNA DOS	SYC	---	---	---	---	---	---	---	---	---	---	---	---
723	INTERTUNA TRES	SYC	---	---	---	---	---	---	---	---	---	---	---	---
738	TXORI AUNDI	SYC	---	---	---		---	---	---	---	---	---	---	---
739	ARTZA	SYC	---	---	---	---	---	---	---	---	---	---	---	---
745	INTERTUNA CUATRO	SYC	---	---	---			---	---	---	---	---	---	---
764	DRACO	SYC	---	---	---	---	---	---	---					
777	THAI UNION 1	THAI			---	---	---							
778	THAI UNION 2	THAI			---	---	---	---			---	---	---	---
781	THAI UNION 3	THAI							---	---	---	---	---	---
782	THAI UNION STAR	THAI			---	---	---	---		---	---	---	---	---

**FRA :France**

**ESP: Spain**

**SYC: Seychelles**

**ITA: Italy**

**MYT: Mayotte**

**THAI: Thailand**



## Year: 2009

Vessel Code	Purse Seiner	Country	Jan	Feb	Mar	Apr	May	Jun	Jul	Aug	Sep	Oct	Nov	Dec
214	ALBACORA 4	ESP	---	---	---	---	---	---	---	---	---	---	---	---
454	FELIPE RUANO	ESP	---	---	---	---	---	---	---	---	---	---	---	---
458	CAMPOLIBRE ALAI	ESP	---	---	---	---	---	---	---	---	---	---	---	---
488	TXORI BERRI	ESP	---	---	---	---	---	---	---	---	---	---	---	---
507	PLAYA DE BAKIO	ESP	---	---	---	---	---	---	---	---	---	---	---	---
530	ELAI ALAI	ESP	---	---	---	---	---	---	---	---	---	---	---	---
615	PLAYA DE ANZORAS	ESP	---	---	---	---	---	---	---	---	---	---	---	---
629	TXORI TOKI	ESP	---	---	---	---	---	---	---	---	---	---	---	---
700	PLAYA DE ARITZATXU	ESP	---	---	---	---	---	---	---	---	---	---	---	---
711	ALBACAN	ESP	---	---	---	---	---	---	---	---	---	---	---	---
742	TXORI ARGÍ	ESP	---	---	---	---	---	---	---	---	---	---	---	---
743	ALBATUN DOS	ESP	---	---	---	---	---	---	---	---	---	---	---	---
750	IZURDIA	ESP	---	---	---	---	---	---	---	---	---	---	---	---
762	ALAKRANA	ESP	---	---	---	---	---	---	---	---	---	---	---	---
775	TXORI GORRI	ESP	---	---	---	---	---	---	---	---	---	---	---	---
482	VIA AVENIR	FRA	---	---	---	---	---	---	---	---	---	---	---	---
490	GUEOTEC	FRA	---	---	---	---	---	---	---	---	---	---	---	---
492	GUERIDEN	FRA	---	---	---	---	---	---	---	---	---	---	---	---
502	VIA MISTRAL	FRA	---	---	---	---	---	---	---	---	---	---	---	---
551	VIA EUROS	FRA	---	---	---	---	---	---	---	---	---	---	---	---
572	AVEL VAD	FRA	---	---	---	---	---	---	---	---	---	---	---	---
600	CAP SAINTE MARIE	FRA	---	---	---	---	---	---	---	---	---	---	---	---
679	MEN GOE	FRA	---	---	---	---	---	---	---	---	---	---	---	---
693	TALENDUIC	FRA	---	---	---	---	---	---	---	---	---	---	---	---
703	STERENN 2	FRA	---	---	---	---	---	---	---	---	---	---	---	---
706	CAP SAINT VINCENT 2	FRA	---	---	---	---	---	---	---	---	---	---	---	---
707	MEN CREN	FRA	---	---	---	---	---	---	---	---	---	---	---	---
760	GLENAN	FRA	---	---	---	---	---	---	---	---	---	---	---	---
769	LE TITAN	FRA	---	---	---	---	---	---	---	---	---	---	---	---
790	FRANCHE TERRE	FRA	---	---	---	---	---	---	---	---	---	---	---	---
796	TORRE GIULIA	FRA	---	---	---	---	---	---	---	---	---	---	---	---
595	TORRE GIULIA	ITA	---	---	---	---	---	---	---	---	---	---	---	---
767	TREVIGNON	MYT	---	---	---	---	---	---	---	---	---	---	---	---
770	DRENNEC	MYT	---	---	---	---	---	---	---	---	---	---	---	---
680	XIXILI	SYC	---	---	---	---	---	---	---	---	---	---	---	---
682	ERROXAPE	SYC	---	---	---	---	---	---	---	---	---	---	---	---
690	DEMIKU	SYC	---	---	---	---	---	---	---	---	---	---	---	---
721	INTERTUNA UNO	SYC	---	---	---	---	---	---	---	---	---	---	---	---
722	INTERTUNA DOS	SYC	---	---	---	---	---	---	---	---	---	---	---	---
723	INTERTUNA TRES	SYC	---	---	---	---	---	---	---	---	---	---	---	---
738	TXORI AUNDI	SYC	---	---	---	---	---	---	---	---	---	---	---	---
739	ARTZA	SYC	---	---	---	---	---	---	---	---	---	---	---	---
745	INTERTUNA CUATRO	SYC	---	---	---	---	---	---	---	---	---	---	---	---
764	DRACO	SYC	---	---	---	---	---	---	---	---	---	---	---	---
777	THAI UNION 1	THAI	---	---	---	---	---	---	---	---	---	---	---	---
778	THAI UNION 2	THAI	---	---	---	---	---	---	---	---	---	---	---	---
781	THAI UNION 3	THAI	---	---	---	---	---	---	---	---	---	---	---	---
782	THAI UNION STAR	THAI	---	---	---	---	---	---	---	---	---	---	---	---

**FRA :France**

**ESP: Spain**

**SYC: Seychelles**

**ITA: Italy**

**MYT: Mayotte**

**THAI: Thailand**

**TABLE 6. Comparative statistics of catch by purse seiners by country in the Western Indian Ocean**  
**Database closed on 04/04/11**  
**(Units: MT)**

**Year 2008**

MONTH	France	Spain	Seychelles	Others <sup>*</sup>	Total
Jan	10465	10721	4878	2079	28143
Feb	6147	9340	5641	1130	22258
Mar	6545	9216	3309	2737	21808
Apr	5059	8584	1455	3006	18104
May	5934	11027	2473	2509	21943
Jun	3700	3465	2032	962	10158
Jul	1845	2440	946	579	5810
Aug	5887	14126	8334	1863	30210
Sep	9132	13617	7371	3110	33229
Oct	6216	16343	10214	2752	35525
Nov	7621	9742	5794	2444	25601
Dec	6581	12901	3936	2751	26168
<b>Total</b>	<b>75131</b>	<b>121522</b>	<b>56382</b>	<b>25921</b>	<b>278956</b>

**Year 2009**

MONTH	France	Spain	Seychelles	Others <sup>*</sup>	Total
Jan	8356	12214	7644	2587	30800
Feb	5485	8318	5382	3159	22345
Mar	8276	10627	5465	3313	27681
Apr	3592	5870	2578	1636	13676
May	3015	4916	2903	1574	12407
Jun	2282	3046	2614	1149	9091
Jul	3441	5955	3803	1167	14365
Aug	5562	19554	9879	4179	39175
Sep	5354	14759	8351	4839	33303
Oct	6311	7467	9153	3625	26556
Nov	2055	2953	4199	785	9992
Dec	4033	10606	6369	2318	23327
<b>Total</b>	<b>57763</b>	<b>106286</b>	<b>68339</b>	<b>30330</b>	<b>262719</b>

<sup>\*</sup>Since space is a limiting factor in Tables 6, flag country appearing in these tables is included based on their catch totals. The remaining flags are classified under “OTHERS”. Flag countries with only one vessel are automatically placed under “OTHERS” to preserve the confidentiality of data pertaining to the vessel. In 2008 and 2009 “OTHERS” included Italy, Mayotte and Thailand.

**TABLE 7. Comparative statistics of effort by purse seiners by Country in the Western Indian Ocean**  
**Database closed on 04/04/11**  
**(Units: Fishing Day)**

**Year 2008**

MONTH	France	Spain	Seychelles	Others <sup>*</sup>	Total
Jan	464	460	291	87	1301
Feb	402	383	276	68	1129
Mar	404	445	216	142	1207
Apr	344	376	152	134	1007
May	326	378	172	125	1001
Jun	295	388	198	95	977
Jul	410	401	258	80	1150
Aug	422	418	252	105	1197
Sep	244	339	174	118	875
Oct	299	409	236	163	1107
Nov	317	392	224	155	1088
Dec	328	423	250	184	1185
<b>Total</b>	<b>4254</b>	<b>4812</b>	<b>2698</b>	<b>1458</b>	<b>13223</b>

**Year 2009**

MONTH	France	Spain	Seychelles	Others <sup>*</sup>	Total
Jan	327	374	235	164	1099
Feb	302	329	207	188	1026
Mar	304	356	228	168	1055
Apr	266	327	159	169	920
May	268	301	171	144	883
Jun	242	240	173	149	805
Jul	178	323	218	154	873
Aug	170	341	204	178	893
Sep	172	334	203	170	879
Oct	175	297	204	185	859
Nov	179	233	195	125	732
Dec	181	360	235	134	911
<b>Total</b>	<b>2762</b>	<b>3814</b>	<b>2432</b>	<b>1928</b>	<b>10936</b>

<sup>\*</sup> See footnote of table 6.

**TABLE 8. Comparative CPUE of purse seiners by country  
in the Western Indian Ocean  
Database closed on 04/04/11  
(Units: MT/Fishing Day)**

**Year 2008**

MONTH	France	Spain	Seychelles	Others <sup>*</sup>	Total
Jan	22.56	23.33	16.78	23.90	21.63
Feb	15.30	24.36	20.43	16.70	19.72
Mar	16.21	20.72	15.34	19.22	18.07
Apr	14.70	22.82	9.54	22.41	17.98
May	18.23	29.17	14.39	20.00	21.92
Jun	12.53	8.92	10.27	10.08	10.40
Jul	4.50	6.08	3.67	7.20	5.05
Aug	13.95	33.82	33.05	17.77	25.24
Sep	37.42	40.12	42.42	26.40	37.98
Oct	20.77	39.97	43.33	16.86	32.09
Nov	24.06	24.87	25.90	15.73	23.54
Dec	20.07	30.50	15.72	14.95	22.08
<b>Total</b>	17.66	25.25	20.89	17.78	21.10

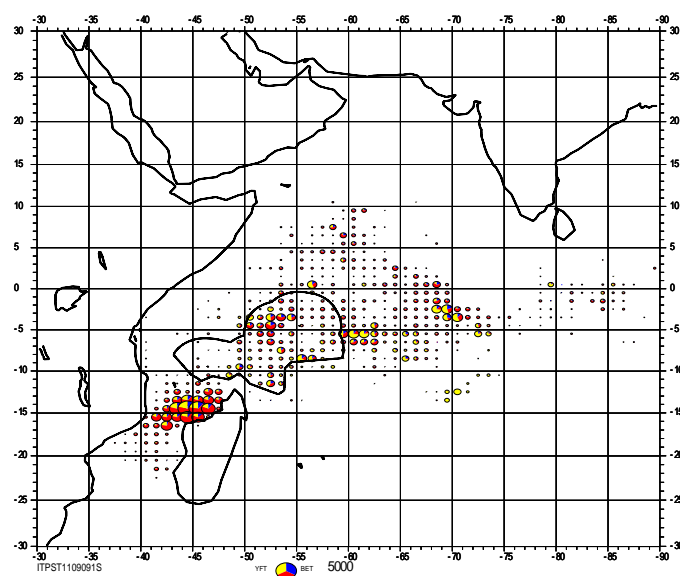
**Year 2009**

MONTH	France	Spain	Seychelles	Others <sup>*</sup>	Total
Jan	25.59	32.65	32.58	15.81	28.03
Feb	18.15	25.31	25.97	16.78	21.77
Mar	27.24	29.87	23.94	19.78	26.23
Apr	13.53	17.98	16.23	9.68	14.87
May	11.26	16.33	17.00	10.94	14.05
Jun	9.42	12.68	15.09	7.72	11.30
Jul	19.34	18.46	17.43	7.55	16.45
Aug	32.81	57.26	48.49	23.45	43.87
Sep	31.05	44.16	41.23	28.44	37.87
Oct	36.16	25.17	44.93	19.64	30.90
Nov	11.47	12.69	21.50	6.28	13.65
Dec	22.31	29.43	27.05	17.29	25.61
<b>Total</b>	20.91	27.86	28.10	15.73	24.02

<sup>\*</sup> See footnote of table 6.

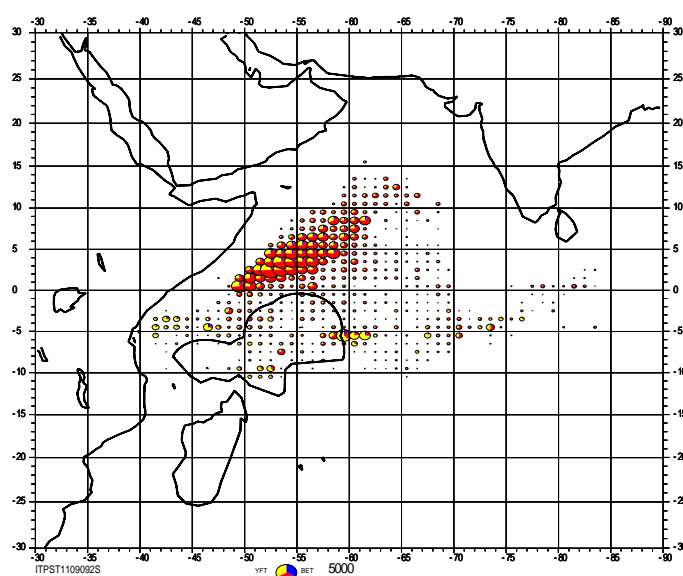
## MAP 1.FISHING GROUNDS EXPLOITED BY PURSE SEINERS IN THE WESTERN INDIAN OCEAN BY 1<sup>0</sup> SQUARE

First Semester 2009



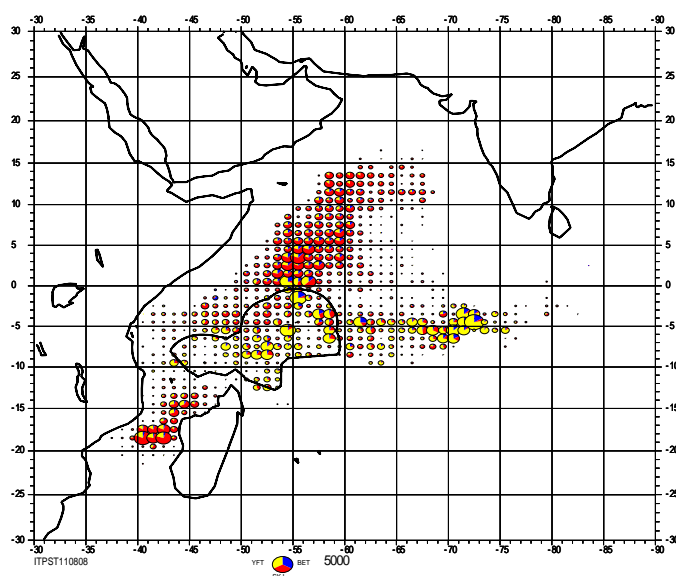
## MAP 2. FISHING GROUNDS EXPLOITED BY PURSE SEINERS IN THE WESTERN INDIAN OCEAN BY 1<sup>0</sup> SQUARE

Second Semester 2009



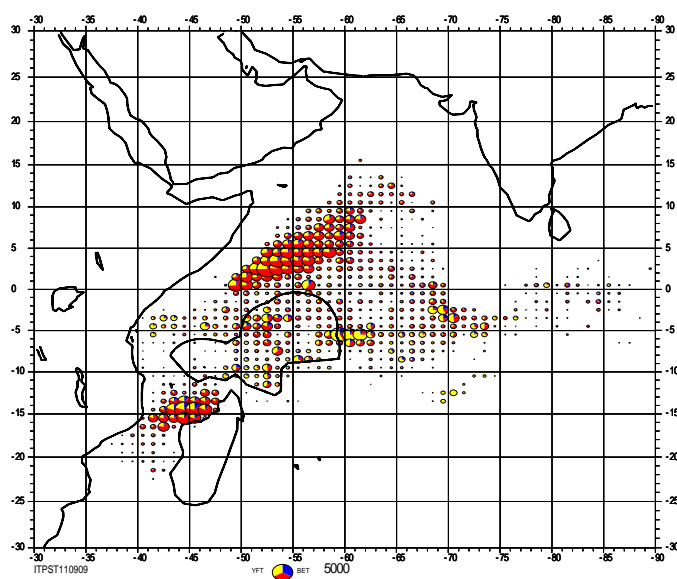
### MAP 3. FISHING GROUNDS EXPLOITED BY PURSE SEINERS IN THE WESTERN INDIAN OCEAN BY 1° SQUARE

Whole Year 2008

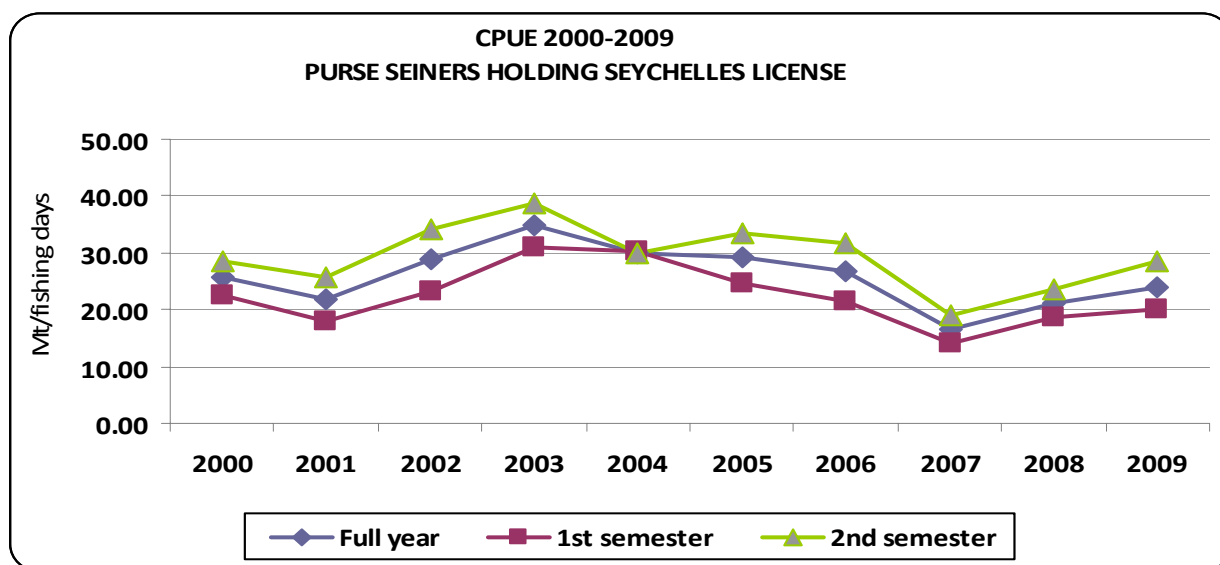
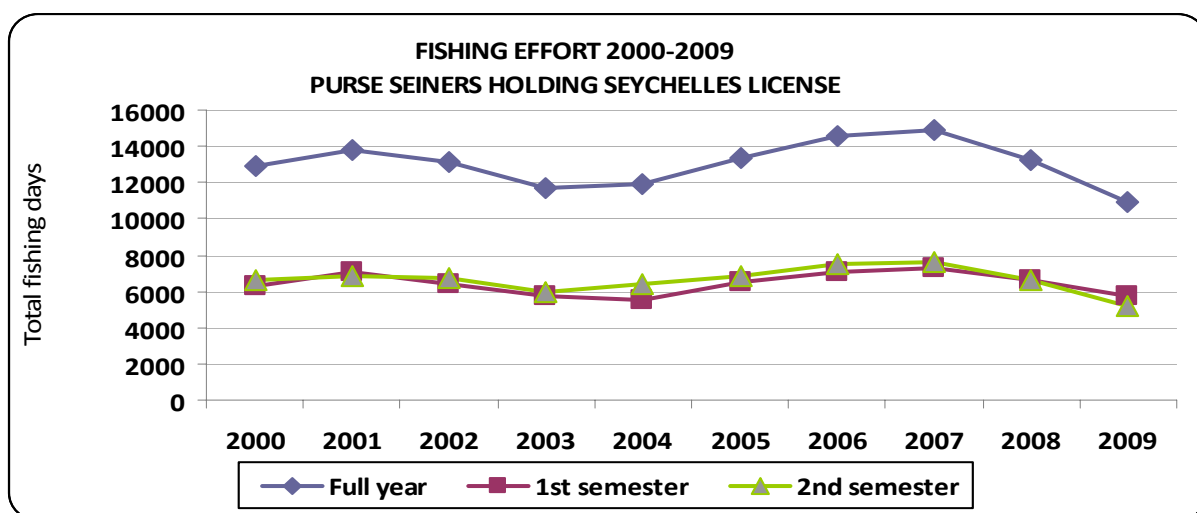
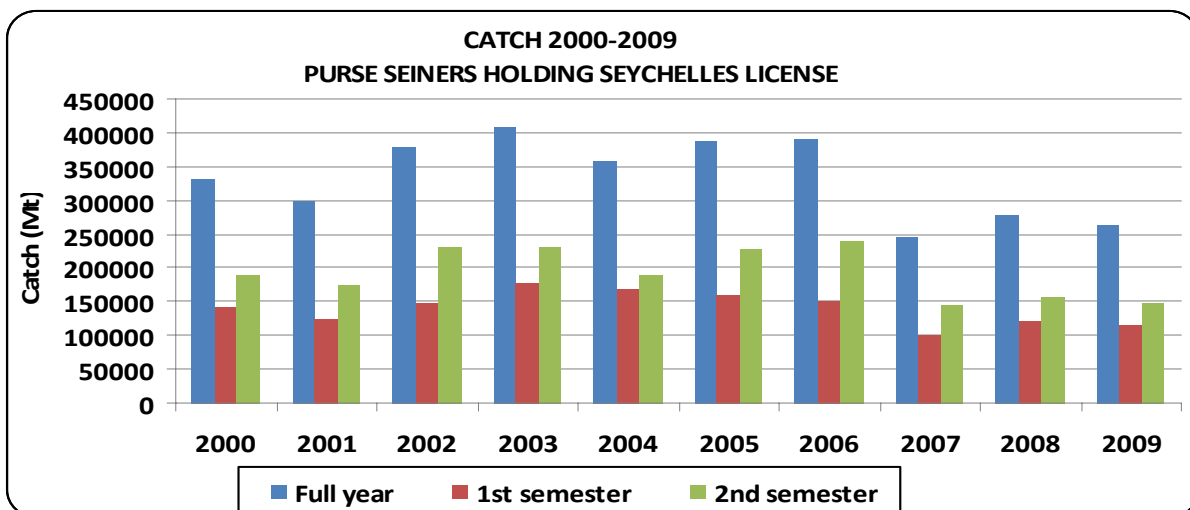


### MAP 4. FISHING GROUNDS EXPLOITED BY PURSE SEINERS IN THE WESTERN INDIAN OCEAN BY 1° SQUARE

Whole Year 2009

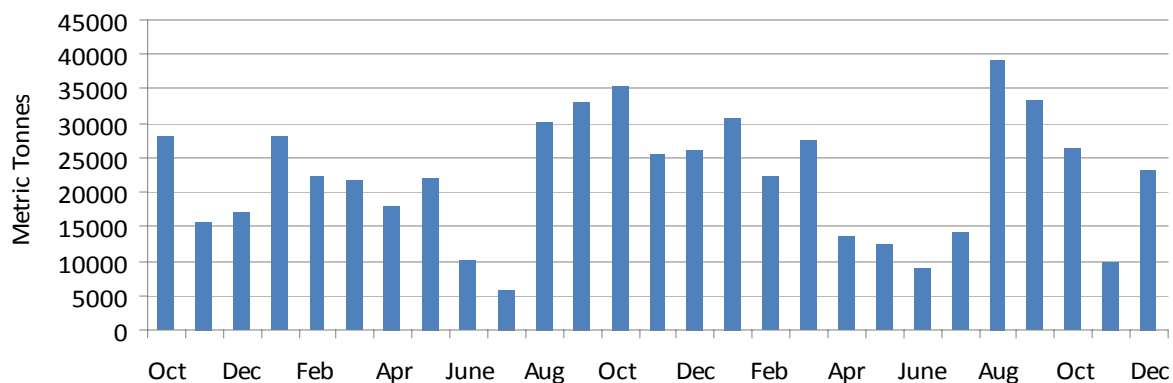






### WIO CATCH: OCTOBER 2007- DECEMBER 2009

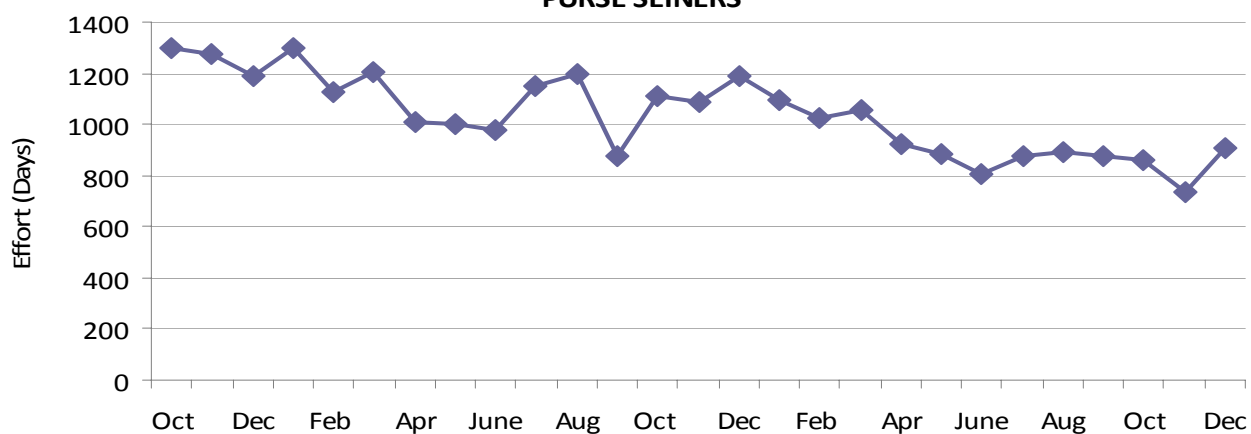
#### PURSE SEINERS



October 2007-December 2009

### WIO EFFORT: OCTOBER 2007-DECEMBER 2009

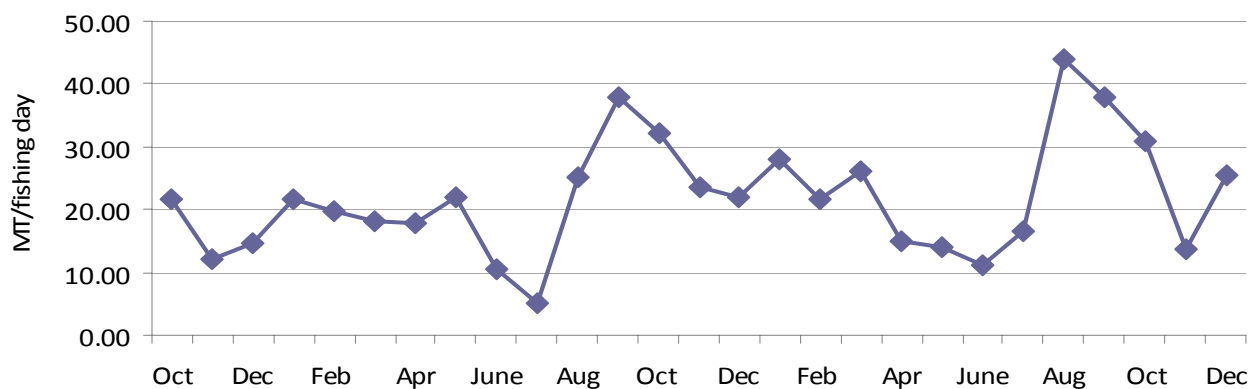
#### PURSE SEINERS



October 2007-December 2009

### WIO CPUE: OCTOBER 2007-DECEMBER 2009

#### PURSE SEINERS



October 2007-December 2009

## **Longline**

Table 9 provides the summary of catch and effort reported by longliners licensed to operate inside of the Seychelles EEZ for the whole years 2008 and 2009.

Tables 10.1, 10.2, 10.3, 10.4, and 10.5 show the longliners' catch for the Seychelles, Japan, Taiwan POC, China and Republic of South Korea, respectively.

Figure 7, 8 and 9 illustrate the catch, effort and CPUE of longliners from October 2007 to December 2009.

Maps 5 and 6 show the distribution of reported catch of longliners by 1° square in the WIO for the first and second semester of 2009 respectively.

Maps 7 and 8 illustrate the distribution of reported catches of longliners for the whole of 2008 and 2009 respectively.

**TABLE 9.0 Summary of longliner catch in the Western Indian Ocean**  
**Database closed on 04/04/11**  
**(Units: catch Mt, percentage in brackets, catch rates Mt/1000 hooks)**

**Year: 2008**

MONTH	VESSELS LICENSED	VESSELS COVERED	HOOKS	CATCH RATE	YELLOWFIN		BIGEYE		SWORDFISH		OTHERS		TOTAL	CUMUL
					Mt	%	Mt	%	Mt	%	Mt	%	MT	TOTAL
Jan	113	88	5739946	0.30	282	16	1157	67	107	6	189	11	1738	1738
Feb	113	76	3540883	0.29	172	17	667	64	69	7	131	13	1039	2777
Mar	112	57	4233568	0.33	317	23	780	56	128	9	158	11	1383	4160
Apr	105	51	3215711	0.41	278	21	794	60	126	9	130	10	1329	5489
May	80	37	2576458	0.45	191	17	610	53	122	11	234	20	1158	6647
Jun	69	36	1576333	0.50	134	17	264	33	95	12	301	38	794	7441
Jul	53	24	1596142	0.46	99	14	172	24	42	6	416	57	729	8170
Aug	50	19	1401612	0.45	81	13	132	21	36	6	379	60	628	8798
Sep	50	16	969484	0.36	24	7	166	48	28	8	128	37	346	9143
Oct	51	22	883133	0.35	31	10	188	60	19	6	73	23	310	9454
Nov	56	41	1845782	0.47	58	7	737	85	32	4	45	5	871	10325
Dec	53	40	2764274	0.54	165	11	1166	79	59	4	92	6	1481	11806
	<b>75</b>	<b>42</b>	<b>30343325</b>	<b>0.39</b>	<b>1833</b>	<b>16</b>	<b>6832</b>	<b>58</b>	<b>862</b>	<b>7</b>	<b>2275</b>	<b>19</b>	<b>11806</b>	

**Year: 2009**

MONTH	VESSELS LICENSED	VESSELS COVERED	HOOKS	CATCH RATE	YELLOWFIN		BIGEYE		SWORDFISH		OTHERS		TOTAL	CUMUL
					Mt	%	Mt	%	Mt	%	Mt	%	MT	TOTAL
Jan	63	59	3585438	0.43	237	15	1011	66	88	6	202	13	1538	1538
Feb	68	72	3151638	0.31	197	20	496	51	66	7	220	22	979	2517
Mar	69	36	1940701	0.33	59	9	359	56	49	8	176	27	644	3161
Apr	68	60	2707310	0.46	93	7	506	41	64	5	585	47	1248	4409
May	39	28	2087687	0.57	39	3	396	33	76	6	683	57	1195	5604
Jun	33	26	1793510	0.44	25	3	282	36	78	10	406	51	791	6395
Jul	29	26	2121742	0.42	45	5	282	32	68	8	492	55	891	7287
Aug	24	21	1514838	0.42	44	7	194	30	50	8	350	55	642	7929
Sep	25	21	855060	0.34	23	8	110	38	33	12	120	42	288	8216
Oct	23	22	1484493	0.35	37	7	349	67	49	9	82	16	519	8735
Nov	18	25	1694463	0.35	37	6	446	75	25	4	86	15	595	9330
Dec	21	30	2310351	0.39	44	5	680	76	48	5	116	13	891	10221
	<b>40</b>	<b>36</b>	<b>25247231</b>	<b>0.40</b>	<b>881</b>	<b>9</b>	<b>5112</b>	<b>50</b>	<b>694</b>	<b>7</b>	<b>3519</b>	<b>34</b>	<b>10221</b>	

**TABLE 10.1 Summary of longliner catch in the Western Indian Ocean**  
**Database closed on 04/04/11**  
**(Units: catch Mt, percentage in brackets, catch rates Mt/1000 hooks)**

**Country: SEYCHELLES**

**Year: 2008**

MONTH	VESSELS LICENSED	VESSELS COVERED	HOOKS	CATCH RATE	YELLOWFIN		BIGEYE		SWORDFISH		OTHERS		TOTAL	CUMUL
					Mt	%	Mt	%	Mt	%	Mt	%	MT	TOTAL
Jan	13	23	1772127	0.37	71	11	493	76	44	7	43	7	651	651
Feb	13	22	1395534	0.32	45	10	340	75	35	8	32	7	452	1103
Mar	13	20	1614242	0.35	57	10	395	70	64	11	45	8	560	1663
Apr	13	20	1529034	0.47	81	11	519	71	66	9	59	8	725	2389
May	13	20	1619661	0.52	45	5	490	58	106	13	204	24	845	3233
Jun	7	19	995977	0.60	29	5	203	34	86	14	279	47	596	3829
Jul	3	15	1066725	0.53	62	11	97	17	33	6	379	66	571	4400
Aug	3	13	1104161	0.49	58	11	94	17	31	6	363	66	546	4945
Sep	3	10	665348	0.40	14	5	113	42	23	9	118	44	269	5214
Oct	3	8	486737	0.42	23	11	110	54	12	6	59	29	204	5418
Nov	6	19	967299	0.51	23	5	423	87	18	4	25	5	489	5907
Dec	6	20	1632887	0.54	74	8	735	83	40	5	40	4	888	6795
	<b>8</b>	<b>17</b>	<b>14849732</b>	<b>0.46</b>	<b>580</b>	<b>9</b>	<b>4009</b>	<b>59</b>	<b>559</b>	<b>8</b>	<b>1646</b>	<b>24</b>	<b>6795</b>	

**Country: SEYCHELLES**

**Year: 2009**

MONTH	VESSELS LICENSED	VESSELS COVERED	HOOKS	CATCH RATE	YELLOWFIN		BIGEYE		SWORDFISH		OTHERS		TOTAL	CUMUL
					Mt	%	Mt	%	Mt	%	Mt	%	MT	TOTAL
Jan	5	22	1754205	0.44	98	13	577	74	50	6	53	7	778	778
Feb	5	21	1383413	0.35	32	7	333	70	25	5	88	18	478	1256
Mar	5	24	1566740	0.34	29	5	302	56	45	8	164	30	540	1797
Apr	5	24	1782026	0.51	32	3	317	35	42	5	520	57	910	2706
May	5	26	2077847	0.57	39	3	395	33	76	6	682	57	1192	3898
Jun	1	26	1793510	0.44	25	3	282	36	78	10	406	51	791	4689
Jul	0	26	2121742	0.42	45	5	282	32	68	8	492	55	891	5581
Aug	0	21	1514838	0.42	44	7	194	30	50	8	350	55	642	6223
Sep	1	20	821768	0.34	21	8	102	37	32	12	120	43	276	6499
Oct	1	21	1396723	0.35	32	7	327	67	46	9	82	17	489	6988
Nov	4	23	1661086	0.35	33	6	436	75	24	4	86	15	579	7567
Dec	5	24	1997998	0.38	39	5	571	76	46	6	99	13	756	8323
	<b>4</b>	<b>23</b>	<b>19871895</b>	<b>0.42</b>	<b>468</b>	<b>6</b>	<b>4117</b>	<b>49</b>	<b>581</b>	<b>7</b>	<b>3142</b>	<b>38</b>	<b>8323</b>	

**TABLE 10.2 Summary of longliner catch in the Western Indian Ocean**  
**Database closed on 04/04/11**  
**(Units: catch Mt, percentage in brackets, catch rates Mt/1000 hooks)**

**Country: JAPAN**

**Year: 2008**

	VESSELS			CATCH	YELLOWFIN		BIGEYE		SWORDFISH		OTHERS		TOTAL	CUMUL
MONTH	LICENSED	COVERED	HOOKS	RATE	Mt	%	Mt	%	Mt	%	Mt	%	MT	TOTAL
Jan	40	23	1354110	0.27	116	32	187	52	16	4	42	12	361	361
Feb	40	26	1273206	0.27	92	27	194	56	11	3	47	14	345	705
Mar	40	25	1959126	0.29	225	39	251	44	24	4	71	12	571	1276
Apr	39	23	1357027	0.32	171	39	189	43	22	5	53	12	435	1711
May	21	12	813247	0.34	144	52	88	32	15	6	30	11	277	1988
Jun	20	14	511406	0.36	101	55	56	31	7	4	19	11	183	2172
Jul	22	7	416117	0.29	31	25	64	53	7	6	20	17	122	2294
Aug	22	5	285451	0.27	22	28	38	48	5	6	13	17	78	2372
Sep	23	6	304136	0.25	10	13	53	69	5	6	9	12	77	2449
Oct	25	6	165555	0.15	3	14	15	58	3	10	5	18	25	2474
Nov	21	5	204655	0.32	6	8	49	75	4	6	8	11	66	2540
Dec	21	9	350850	0.31	34	32	53	49	6	6	14	13	108	2649
	28	13	8994885	0.29	956	36	1236	47	124	5	332	13	2649	

**Country: JAPAN**

**Year: 2009**

	VESSELS			CATCH	YELLOWFIN		BIGEYE		SWORDFISH		OTHERS		TOTAL	CUMUL
MONTH	LICENSED	COVERED	HOOKS	RATE	Mt	%	Mt	%	Mt	%	Mt	%	MT	TOTAL
Jan	32	15	456861	0.47	68	31	70	32	11	5	68	31	217	217
Feb	33	23	1015459	0.31	134	42	68	21	25	8	90	28	317	534
Mar	31	6	293044	0.28	27	34	39	49	3	4	10	13	81	614
Apr	27	11	425946	0.37	45	29	63	40	13	8	36	23	156	770
May	1	1	3240	0.34	0	12	1	54	0	8	0	26	1	772
Jun	1	0	0	0.00	0	0	0	0	0	0	0	0	0	772
Jul	1	0	0	0.00	0	0	0	0	0	0	0	0	0	772
Aug	1	0	0	0.00	0	0	0	0	0	0	0	0	0	772
Sep	1	0	0	0.00	0	0	0	0	0	0	0	0	0	772
Oct	1	0	0	0.00	0	0	0	0	0	0	0	0	0	772
Nov	0	0	0	0.00	0	0	0	0	0	0	0	0	0	772
Dec	0	0	0	0.00	0	0	0	0	0	0	0	0	0	772
	13	11	2194550	0.35	274	36	241	31	52	7	205	27	772	



**TABLE 10.3 Summary of longliner catch in the Western Indian Ocean**  
**Database closed on 04/04/11**  
**(Units: catch Mt, percentage in brackets, catch rates Mt/1000 hooks)**

**Country: TAIWAN POC**

**Year: 2008**

MONTH	VESSELS LICENSED	VESSELS COVERED	HOOKS	CATCH RATE	YELLOWFIN		BIGEYE		SWORDFISH		OTHERS		TOTAL	CUMUL
					Mt	%	Mt	%	Mt	%	Mt	%	MT	TOTAL
Jan	51	42	2613708	0.28	95	13	478	66	47	7	103	14	726	726
Feb	50	27	850543	0.24	20	10	122	61	12	6	46	23	200	927
Mar	49	11	628016	0.28	24	14	102	59	14	8	34	19	173	1100
Apr	43	7	303550	0.31	16	17	60	62	6	7	14	14	96	1195
May	36	5	143550	0.25	2	5	32	91	0	1	1	3	36	1231
Jun	31	2	53250	0.20	2	17	4	39	2	21	2	22	11	1242
Jul	16	1	84300	0.33	4	14	8	30	2	6	14	50	27	1269
Aug	15	1	12000	0.36	1	27	0	12	0	1	3	61	4	1273
Sep	15	0	0	0.00	0	0	0	0	0	0	0	0	0	1273
Oct	14	7	188471	0.39	3	5	57	79	4	6	8	11	73	1346
Nov	19	15	610303	0.49	28	9	254	84	10	3	11	4	302	1648
Dec	17	10	737636	0.64	55	12	369	78	12	2	36	8	471	2119
	<b>30</b>	<b>12</b>	<b>6225328</b>	<b>0.34</b>	<b>249</b>	<b>12</b>	<b>1487</b>	<b>70</b>	<b>110</b>	<b>5</b>	<b>270</b>	<b>13</b>	<b>2119</b>	

**Country: TAIWAN POC**

**Year: 2009**

MONTH	VESSELS LICENSED	VESSELS COVERED	HOOKS	CATCH RATE	YELLOWFIN		BIGEYE		SWORDFISH		OTHERS		TOTAL	CUMUL
					Mt	%	Mt	%	Mt	%	Mt	%	MT	TOTAL
Jan	15	16	1163579	0.41	61	13	332	69	24	5	64	13	481	481
Feb	15	18	435068	0.24	7	7	65	63	10	9	22	21	103	584
Mar	19	5	66433	0.30	2	12	16	79	1	3	1	6	20	604
Apr	29	21	394238	0.37	12	8	104	71	8	6	22	15	146	750
May	26	0	0	0.00	0	0	0	0	0	0	0	0	0	750
Jun	24	0	0	0.00	0	0	0	0	0	0	0	0	0	750
Jul	22	0	0	0.00	0	0	0	0	0	0	0	0	0	750
Aug	21	0	0	0.00	0	0	0	0	0	0	0	0	0	750
Sep	21	1	33292	0.34	2	18	8	72	1	8	0	2	11	762
Oct	19	1	87770	0.34	5	18	22	73	3	9	0	0	30	791
Nov	12	2	33377	0.49	4	27	10	63	1	6	1	5	16	808
Dec	15	6	312353	0.43	5	4	109	81	2	2	18	13	134	942
	<b>20</b>	<b>9</b>	<b>2526111</b>	<b>0.37</b>	<b>99</b>	<b>11</b>	<b>666</b>	<b>71</b>	<b>49</b>	<b>5</b>	<b>128</b>	<b>14</b>	<b>942</b>	

**TABLE 10.4 Summary of longliner catch in the Western Indian Ocean**  
**Database closed on 04/04/11**  
**(Units: catch Mt, percentage in brackets, catch rates Mt/1000 hooks)**

**Country: CHINA**

**Year: 2008**

MONTH	VESSELS	VESSELS	HOOKS	CATCH	YELLOWFIN		BIGEYE		SWORDFISH		OTHERS		TOTAL	CUMUL
	LICENSED	COVERED		RATE	Mt	%	Mt	%	Mt	%	Mt	%	MT	TOTAL
Jan	5	0	0	0.00	0	0	0	0	0	0	0	0	0	0
Feb	5	0	0	0.00	0	0	0	0	0	0	0	0	0	0
Mar	5	0	0	0.00	0	0	0	0	0	0	0	0	0	0
Apr	5	0	0	0.00	0	0	0	0	0	0	0	0	0	0
May	5	0	0	0.00	0	0	0	0	0	0	0	0	0	0
Jun	6	1	15700	0.25	2	56	1	21	0	3	1	20	4	4
Jul	6	1	29000	0.29	3	31	3	35	0	5	2	29	9	12
Aug	4	0	0	0.00	0	0	0	0	0	0	0	0	0	12
Sep	4	0	0	0.00	0	0	0	0	0	0	0	0	0	12
Oct	4	1	42370	0.20	1	13	6	70	1	7	1	10	8	21
Nov	4	2	63525	0.23	2	16	10	72	0	3	1	9	14	35
Dec	4	1	42900	0.30	2	16	8	65	0	3	2	16	13	48
	<b>5</b>	<b>2</b>	<b>193495</b>	<b>0.25</b>	<b>10</b>	<b>21</b>	<b>29</b>	<b>59</b>	<b>2</b>	<b>4</b>	<b>8</b>	<b>16</b>	<b>48</b>	

**Country: CHINA**

**Year: 2009**

MONTH	VESSELS	VESSELS	HOOKS	CATCH	YELLOWFIN		BIGEYE		SWORDFISH		OTHERS		TOTAL	CUMUL
	LICENSED	COVERED		RATE	Mt	%	Mt	%	Mt	%	Mt	%	MT	TOTAL
Jan	4	5	204793	0.30	10	16	32	52	4	6	16	26	61	61
Feb	4	5	227539	0.27	19	31	23	38	5	9	14	22	61	123
Mar	4	0	0	0.00	0	0	0	0	0	0	0	0	0	123
Apr	4	3	63100	0.30	2	8	12	62	1	8	4	23	19	141
May	4	1	6600	0.36	0	12	1	45	1	26	0	17	2	144
Jun	4	0	0	0.00	0	0	0	0	0	0	0	0	0	144
Jul	3	0	0	0.00	0	0	0	0	0	0	0	0	0	144
Aug	1	0	0	0.00	0	0	0	0	0	0	0	0	0	144
Sep	1	0	0	0.00	0	0	0	0	0	0	0	0	0	144
Oct	1	0	0	0.00	0	0	0	0	0	0	0	0	0	144
Nov	1	0	0	0.00	0	0	0	0	0	0	0	0	0	144
Dec	0	0	0	0.00	0	0	0	0	0	0	0	0	0	144
	<b>3</b>	<b>4</b>	<b>502032</b>	<b>0.29</b>	<b>30</b>	<b>21</b>	<b>68</b>	<b>47</b>	<b>11</b>	<b>8</b>	<b>34</b>	<b>24</b>	<b>144</b>	

**TABLE 10.5 Summary of longliner catch in the Western Indian Ocean**  
**Database closed on 04/04/11**  
 (Units: catch Mt, percentage in brackets, catch rates Mt/1000 hooks)

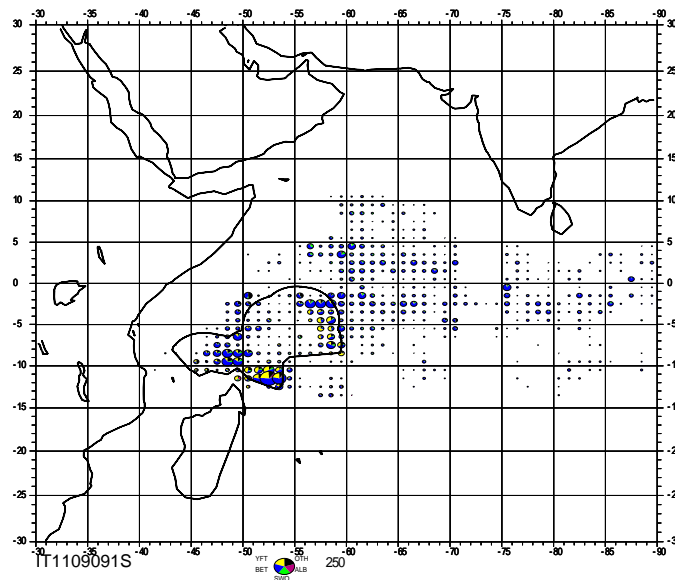
**Country: REPUBLIC OF SOUTH KOREA      Year: 2009**

MONTH	VESSELS	VESSELS	HOOKS	CATCH	YELLOWFIN		BIGEYE		SWORDFISH		OTHERS		TOTAL	CUMUL
	LICENSED	COVERED		RATE	Mt	%	Mt	%	Mt	%	Mt	%	MT	TOTAL
Jan	0	0	0	0.00	0	0	0	0	0	0	0	0	0	0
Feb	7	3	55735	0.19	5	48	3	26	1	5	2	21	11	11
Mar	7	1	14484	0.20	0	12	2	61	0	5	1	22	3	14
Apr	0	0	0	0.00	0	0	0	0	0	0	0	0	0	14
May	0	0	0	0.00	0	0	0	0	0	0	0	0	0	14
Jun	0	0	0	0.00	0	0	0	0	0	0	0	0	0	14
Jul	0	0	0	0.00	0	0	0	0	0	0	0	0	0	14
Aug	0	0	0	0.00	0	0	0	0	0	0	0	0	0	14
Sep	0	0	0	0.00	0	0	0	0	0	0	0	0	0	14
Oct	0	0	0	0.00	0	0	0	0	0	0	0	0	0	14
Nov	0	0	0	0.00	0	0	0	0	0	0	0	0	0	14
Dec	0	0	0	0.00	0	0	0	0	0	0	0	0	0	14
	<b>7</b>	<b>3</b>	<b>70219</b>	<b>0.19</b>	<b>6</b>	<b>40</b>	<b>5</b>	<b>33</b>	<b>1</b>	<b>5</b>	<b>3</b>	<b>21</b>	<b>14</b>	

- Please note that no licenses were taken by longline fishing vessels from Republic of South Korea during year 2008

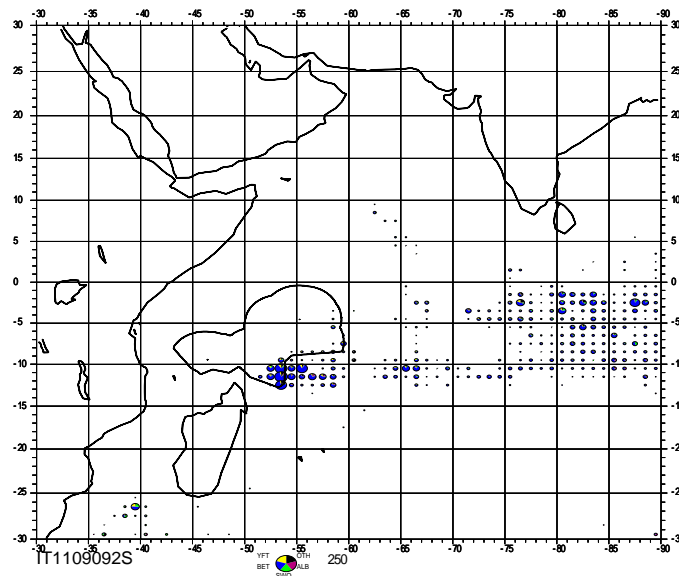
**MAP 5. FISHING GROUNDS EXPLOITED BY LONGLINERS IN THE  
WESTERN INDIAN OCEAN BY 1° SQUARE**

**First semester 2009**



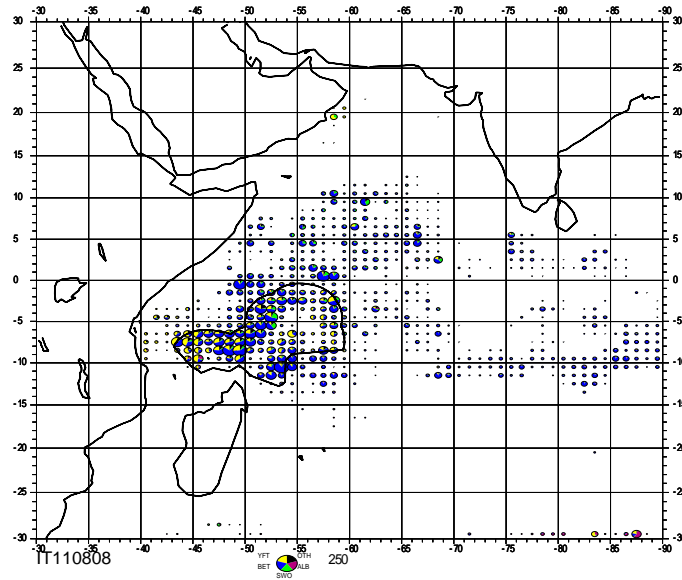
**MAP 6. FISHING GROUNDS EXPLOITED BY LONGLINERS IN THE  
WESTERN INDIAN OCEAN BY 1° SQUARE**

**Second semester 2009**



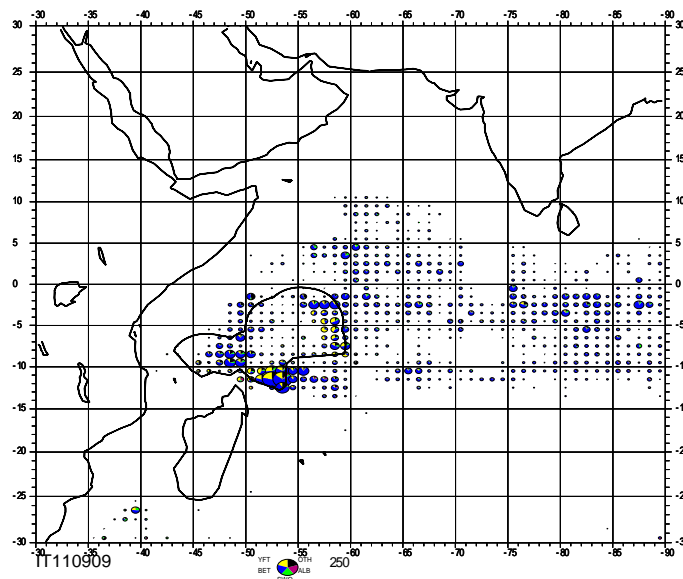
**MAP 7. FISHING GROUNDS EXPLOITED BY LONGLINERS IN THE  
WESTERN INDIAN OCEAN BY 1° SQUARE**

**Whole year 2008**

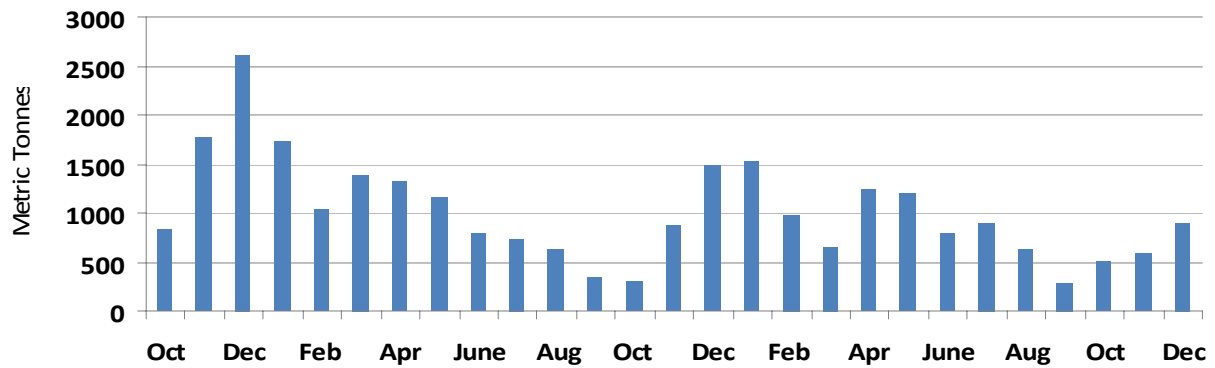


**MAP 8. FISHING GROUNDS EXPLOITED BY LONGLINERS IN THE  
WESTERN INDIAN OCEAN BY 1° SQUARE**

**Whole year 2009**

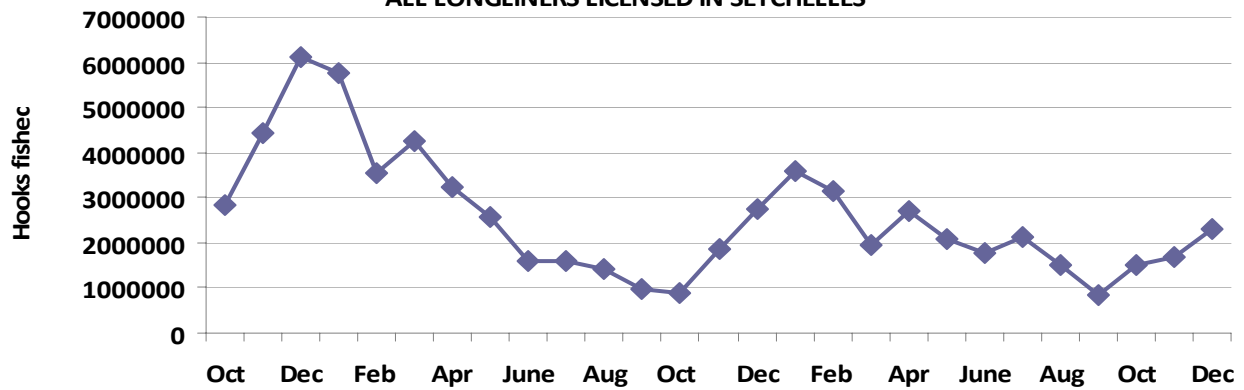


**FIGURE 7**  
**CATCH: LAST 27 MONTHS**  
**ALL LONGLINERS LICENSED IN SEYCHELLES**



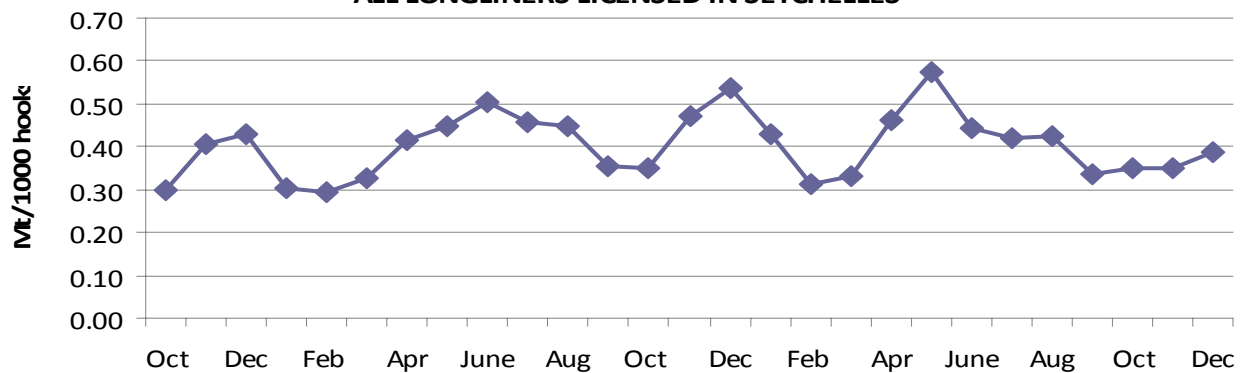
October 2007-December 2009

**FIGURE 8**  
**EFFORT: LAST 27 MONTHS**  
**ALL LONGLINERS LICENSED IN SEYCHELLES**



October 2007-December 2009

**FIGURE 9**  
**CPUE: LAST 27 MONTHS**  
**ALL LONGLINERS LICENSED IN SEYCHELLES**



October 2007-December 2009